

Connecting nature across Auckland



NORTH - WEST
WILDLINK





Partnership Group

Support, promote and connect



GIVING NATURE A VOICE



Te Papa Atua



Open Space New Zealand
Ngā Kaiwhiri Pāpā



Te Kaitiaki o Te Māori Kaitiaki

Success for the Partnership looks like...

- Thriving wildlife and healthy habitat
- Knowledge and behaviour change – people are contributing
- Multi-functional, connected physical space
- Multiple and unexpected benefits – e.g. ecotourism
- Quantifiable measures: technology and monitoring
- Support from a strong collaborative partnership working with involved communities



NORTH - WEST
WILDLINK

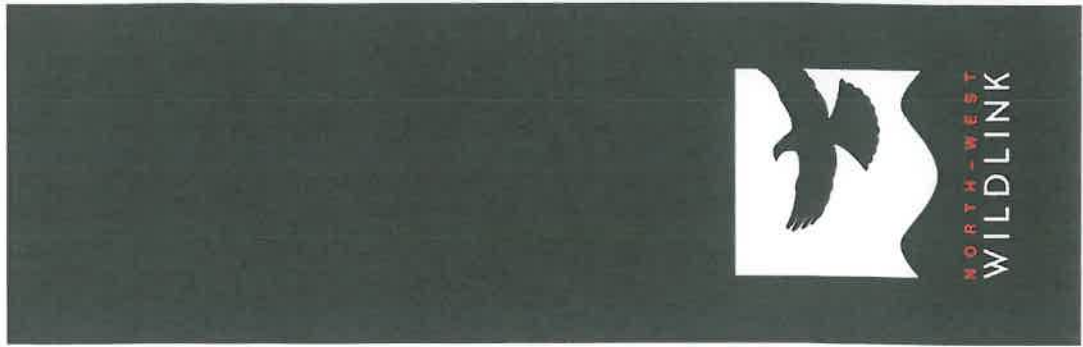


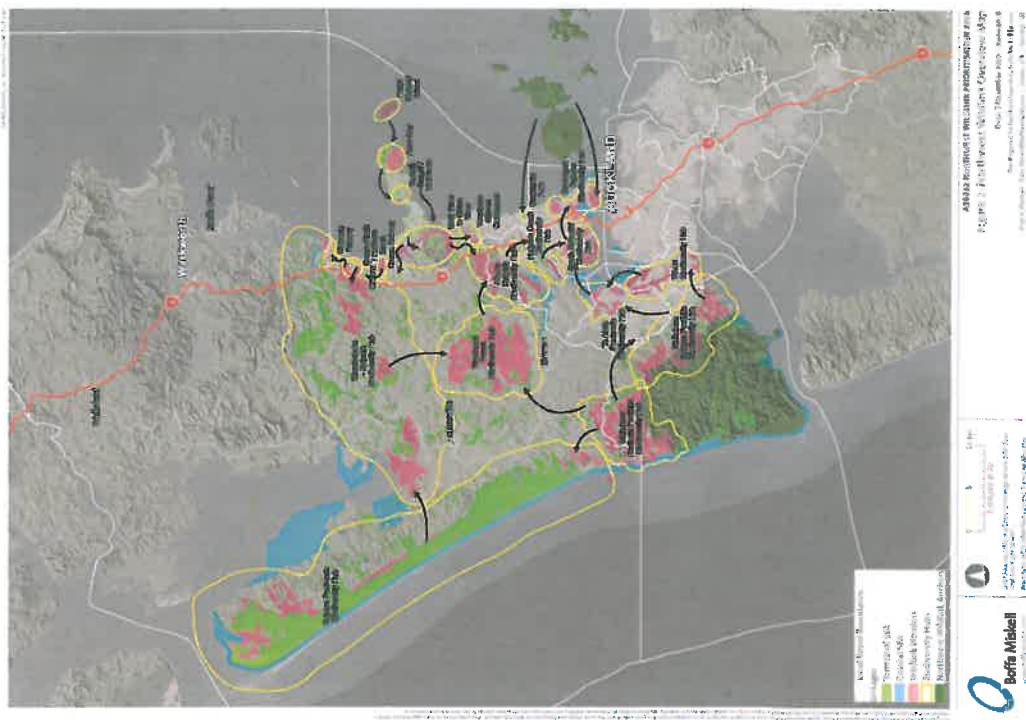
NORTH - WEST
WILDLINK

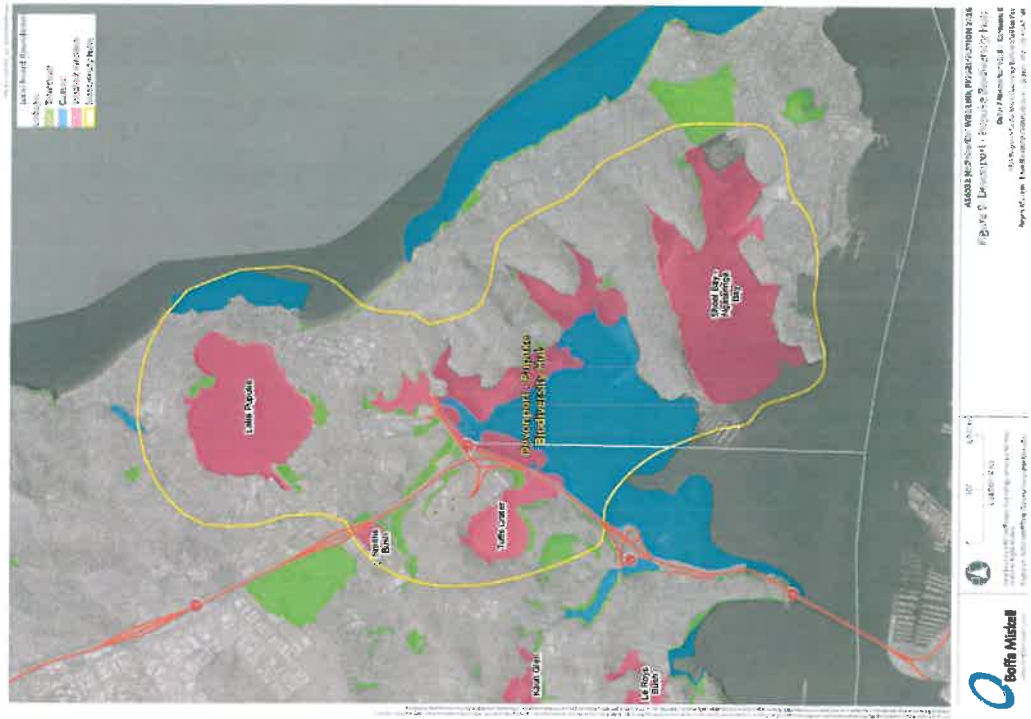
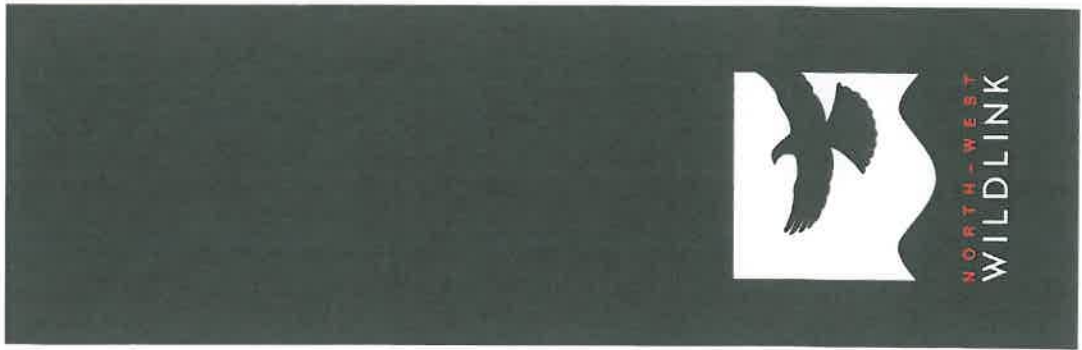
Aims

1. Create habitats that are:
 - Safe
 - Connected
 - Healthy
2. Inspire & connect Aucklanders
3. Encourage collaboration between agencies, organisations and groups









Why this approach works

- Aucklanders from all walks of life can participate
- More people are inspired when they're part of something bigger
- Ecosystems function across a large scale – wildlife move across boundaries



NORTH - WEST
WILDLINK

Common challenges

- Finding information / lack of skills
- Feeling and being supported
- Volunteer and community engagement
- Group management
- Practical challenges



NORTH-WEST
WILDLINK

What's next with the Partnership Group?

- Improved communication and interaction with networks/projects
- Monitoring and research programme 2018
- Responding / supporting common challenges



NORTH - WEST
WILDLINK

North-West Wildlink

We can achieve more together, than we can alone

- sharing ideas
- fostering more connections
- greater ecological gain



NORTH - WEST
WILDLINK