

Auckland Council Community Parks

Connecting Aucklanders to nature



Outline for today

Community Parks and Places

Key Stakeholders

Community Ranger Role

Wider landscape activity



Auckland's open space network

MORE THAN **3000 local**
community parks
26 REGIONAL PARKS
241 SPORTS PARKS



Auckland Council's open space network is complimented by significant Department of Conservation, trusts and private open spaces that provides recreational and conservation outcomes.



Integrated Delivery

Hands on community/volunteer ecological restoration

Community Ranger coordination

Volunteer and Contractor work cohesion

Utilising a mix of skills

Ecological Restoration Framework

Harnessing resources

(e.g. variety of funding streams both internal and external to council)



Common Focus



Volunteering

**Approximately 200
Friends of groups
involved in ecological
restoration across the
region**

Activities

- Beach and Community park clean ups
- Community Planting
- Pest animal control
- Pest plant control
- Environmental Programmes - camps and walks
- Custodians of local parks



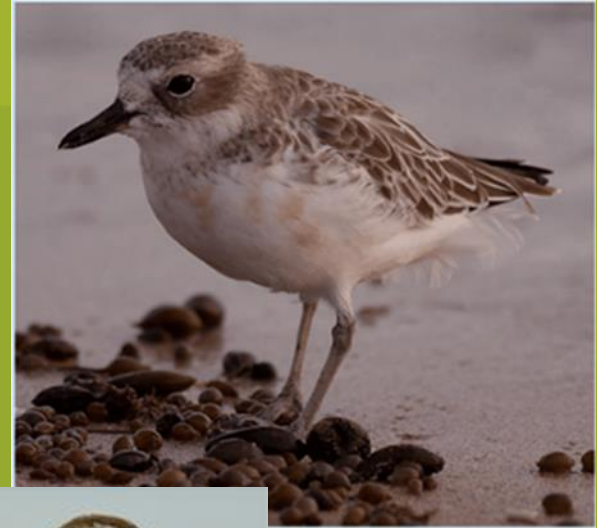
Integrated Approach

- **Nurturing and learning** from the current integrated approach
- **Promoting and supporting** greater community involvement - environmental and social benefits
- **Embracing the environment** through education
- **Enhancing regional coordination** within the park volunteer sector
- **Enhancing relationships** internal & external
- **Ecological community networks** for Local Board areas developed across the region
- **An environment** for our future generations to cherish and support

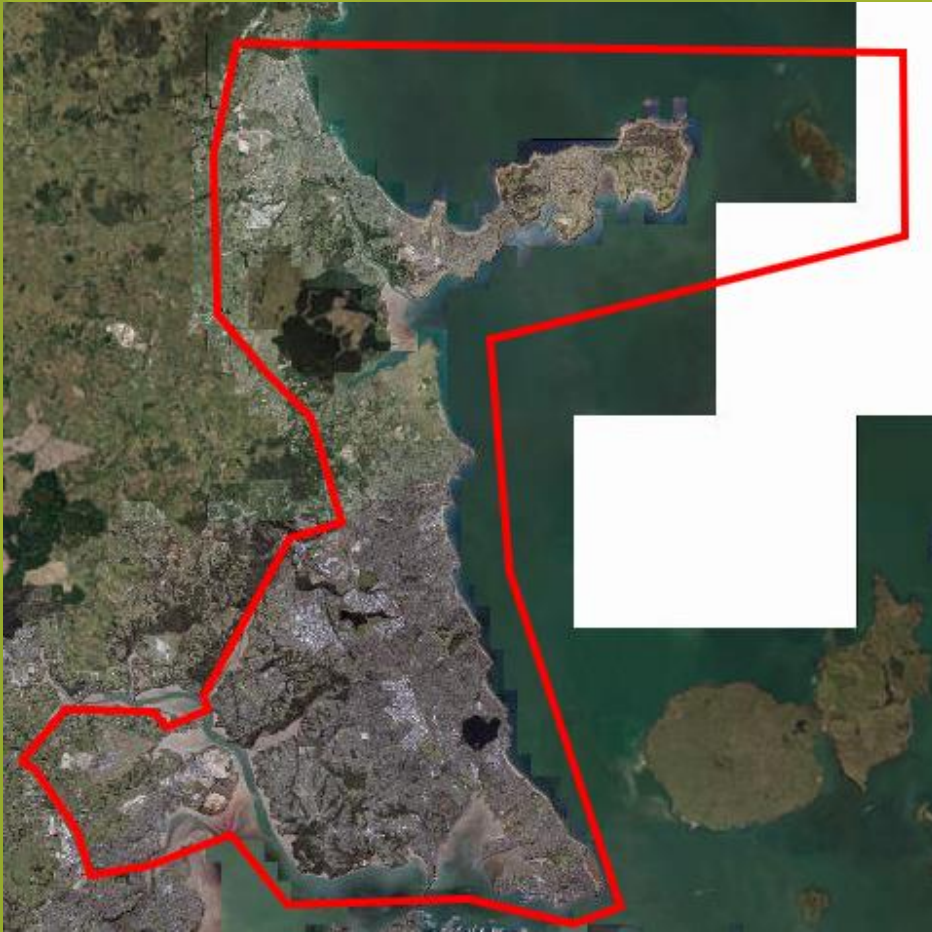


Community Parks Activation

- **2600ha** of significant natural areas managed by Community Facilities and volunteers
- **60,000 volunteer hours** donated to Community Parks restoration in the 2016-2017 year.
- Local Boards and council delivery working in close **partnership** with community care groups
- Wider **community education and understanding** of the importance of our native ecology
- Community/local parks used as **principal lead for community engagement** in the environment.



Tahi



4 Local Boards

- Devonport-Takapuna
- Kaipatiki
- Hibiscus and Bays
- Upper Harbour
- 65 “Friends of” groups
- 17 groups carrying out pest animal control over multiple sites



Rua

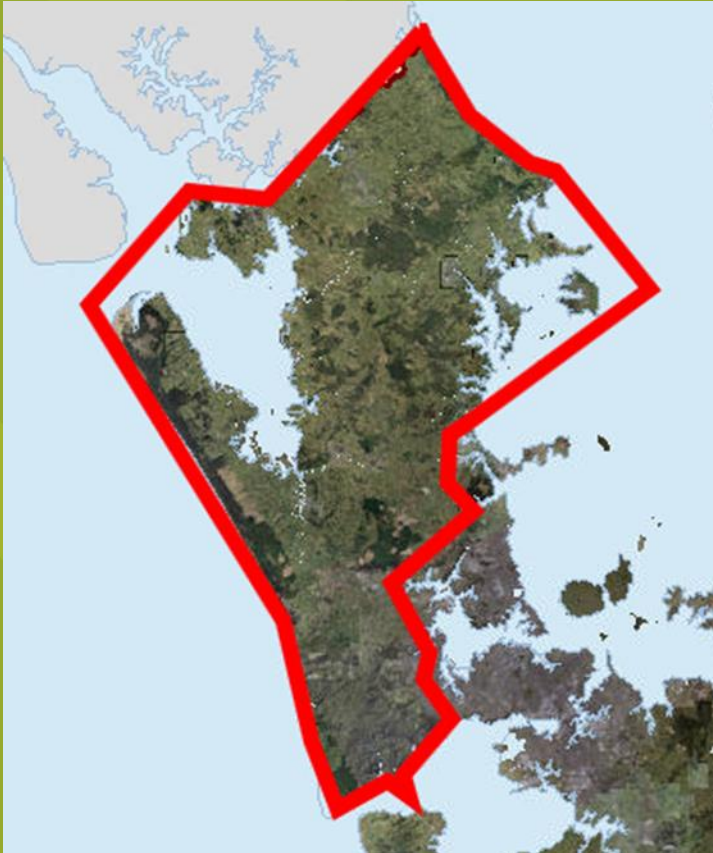


5 local Boards

- Albert Eden
- Puketepapa
- Whau
- Waiheke
- Great Barrier
- 30 “Friends of” groups
- 12 groups carrying out pest animal control over multiple sites



Toru



3 Local Boards

- Rodney
- Henderson- Massey
- Waitakere Rangers
- 48 Friends of groups including Project Twin Streams
- 10 groups carrying out pest animal control over multiple sites



Wha

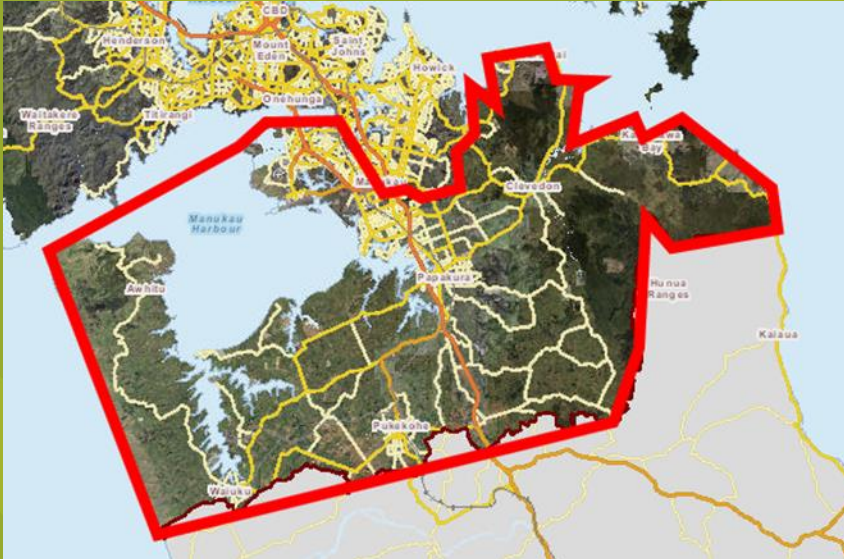


4 Local Boards

- Howick
- Maungakeikei-Tamaki
- Orakei
- Waitemata
- 25 groups carrying out pest animal control over multiple sites



Rima



5 Local Boards

- Franklin
- Mangere-Otahuhu
- Manurewa
- Otara-Papatoetoe
- Papakura
- 17 Friends of groups including
- 2 groups carrying out pest animal control over multiple sites



Community Parks, Community Ranger

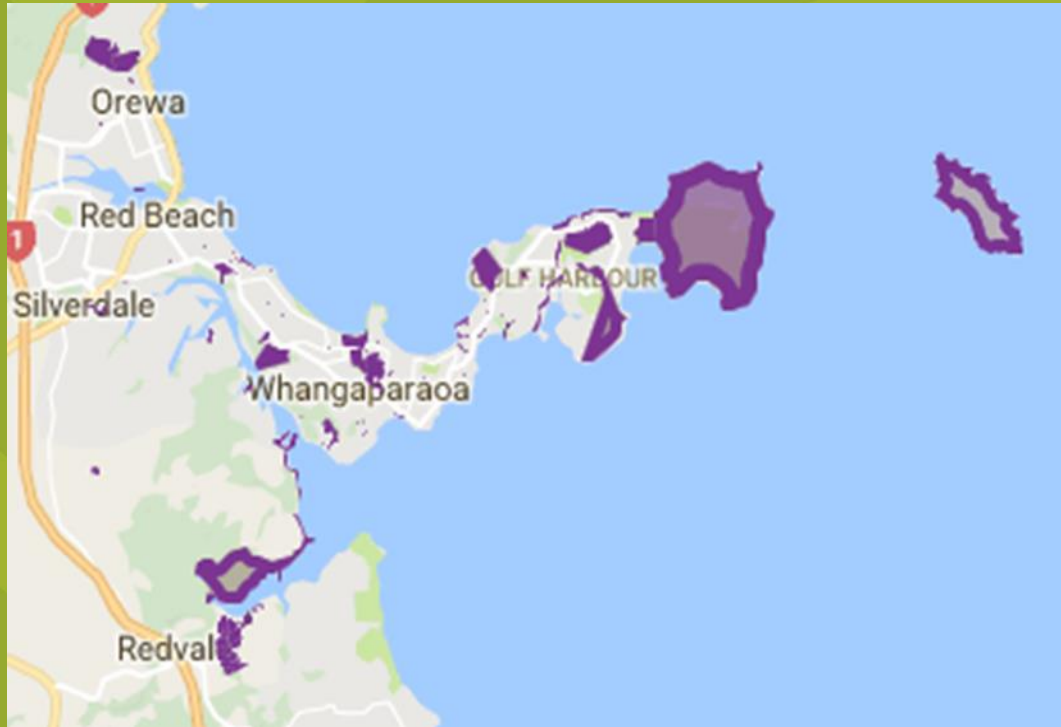
- Advice on staged site/park management
- Pest plant information and support to control
- Pest Animal information and support to control
- Assisting in the selection and supply of plant species
- Providing contractor support
- Training e.g. growsafe, health and safety
- Liaison with other council departments
- Tools and material supply



North West Wildlink



Whangaparaoa Pest Free Peninsula Hibiscus Forest and Bird



Control pest animals by providing a grid of traps or bait stations on all parkland, golf course land and for 1 in 5 households





Nga mihi nui

