

# Manuhiri Kaitiaki Charitable Trust

## Ngāroto Restoration and Recovery Project

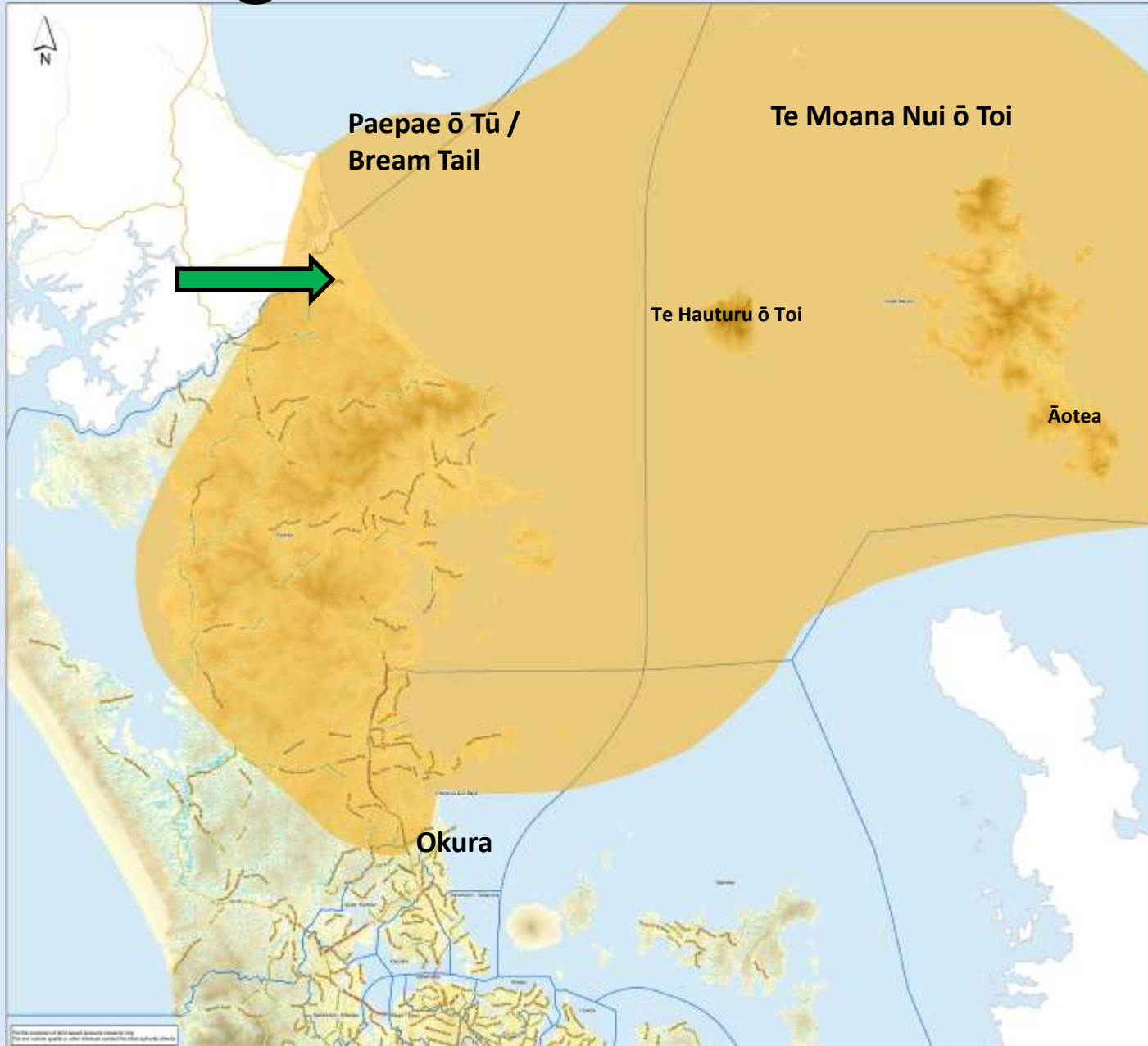


# Ngāti Manuhiri Claims Settlement Act (2012)

- Through the Treaty of Waitangi settlement process
- Mandated Ngāti Manuhiri as Mana Whenua for rohe
- Provided statutory acknowledgement of statements by Ngāti Manuhiri regarding cultural, spiritual, historical and traditional associations
  - Including Ngāroto

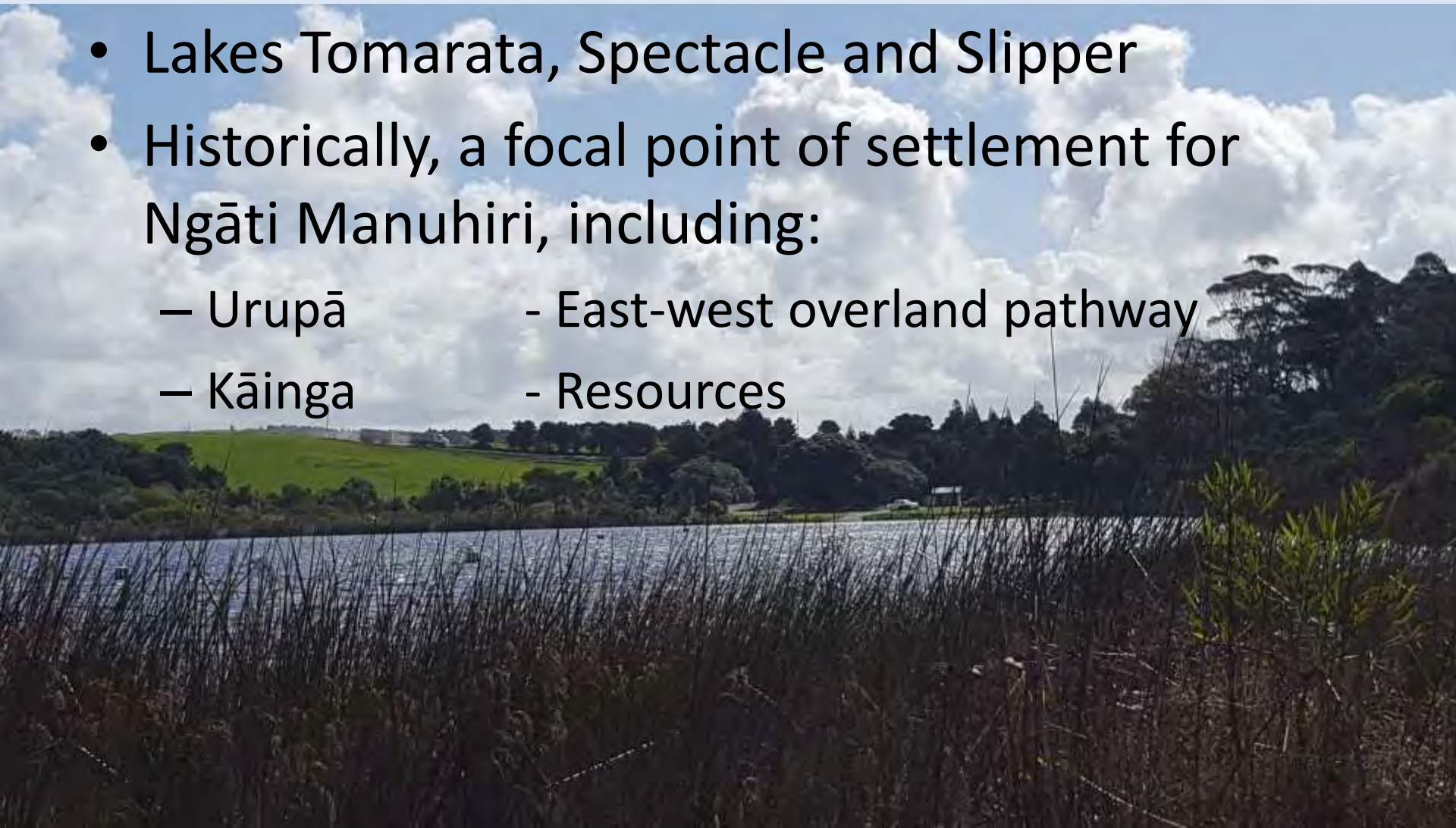


# Ngāti Manuhiri Rohe



# Ngāroto (The Lakes)

- Lakes Tomarata, Spectacle and Slipper
- Historically, a focal point of settlement for Ngāti Manuhiri, including:
  - Urupā
  - Kāinga
  - East-west overland pathway
  - Resources





# Ngāroto – What we know

- Water quality of Lakes Spectacle and Slipper is very poor. Lake Tomarata...better
- Important wetland habitat for biodiversity
- Local iwi dis-engaged culturally from lakes



# Ngāroto Restoration and Recovery Project

- In 2016, the MKCT in collaboration with AC, were awarded an MfE grant for restoration project around Ngāroto.
- Project started in May 2017
- The 3 year project has two main focuses
  - To facilitate the re-engagement of iwi as Kaitiaki of Ngāroto
  - To improve the water quality of the dune lakes

# Ngāroto Restoration and Recovery Project

- Focus 1 will be achieved through
  - Ngāti Manuhiri involvement
  - Replacing a significant cultural marker at Lake Tomorata
  - Encourage iwi participation in Community hui, work days and events
  - Install cultural interpretation on site



# Ngāroto Restoration and Recovery Project

- Focus 2 will be achieved through
  - Engaging with community and landowners
  - Water quality testing
  - Pest Management
  - Revegetation
  - Assessing the impact of recreational lake use
  - Development of a Catchment wide Management Plan



# Year One

- Established relationship with Co  
– Community meeting held



- Com  
landc  
– Tw  
Sli  
• Com  
Lakes  
• Pest  
• Lake



h  
jacent Lake  
g  
oring in







# What's going right...

- Hiring the right people
- Relationships (AC, AT, DOC, Community Group)
  - School involvement
  - Million Trees Project
  - Te Arai Nurseries (Te Uri ō Hau)
  - DOC Lease/Mental Health Day
- Serendipity (Community Group, Bittern)
- Momentum
  - Pest fish                      - Te Arai Regional Park
  - AC Reserve
  - DOC Reserve

# What could be better...

- Budgeting
  - For a Communications Planner
  - Pest Control Strategies
  - Pest Fish
  - Higher rate for Manager/Co-ordinator
- Whanau involvement
- Tapping into wider community
  - i.e. always the same people/over committed

# Year Three looking ahead..

- Complete fencing and planting at Lake Spectacle
- Facilitate more individual landowner fencing/planting/project interest
- Complete Catchment Management Plan
- Install cultural marker and interpretation
- Agree plan for continuation of work with Community Group lead i.e. handover



# Kia Ora

