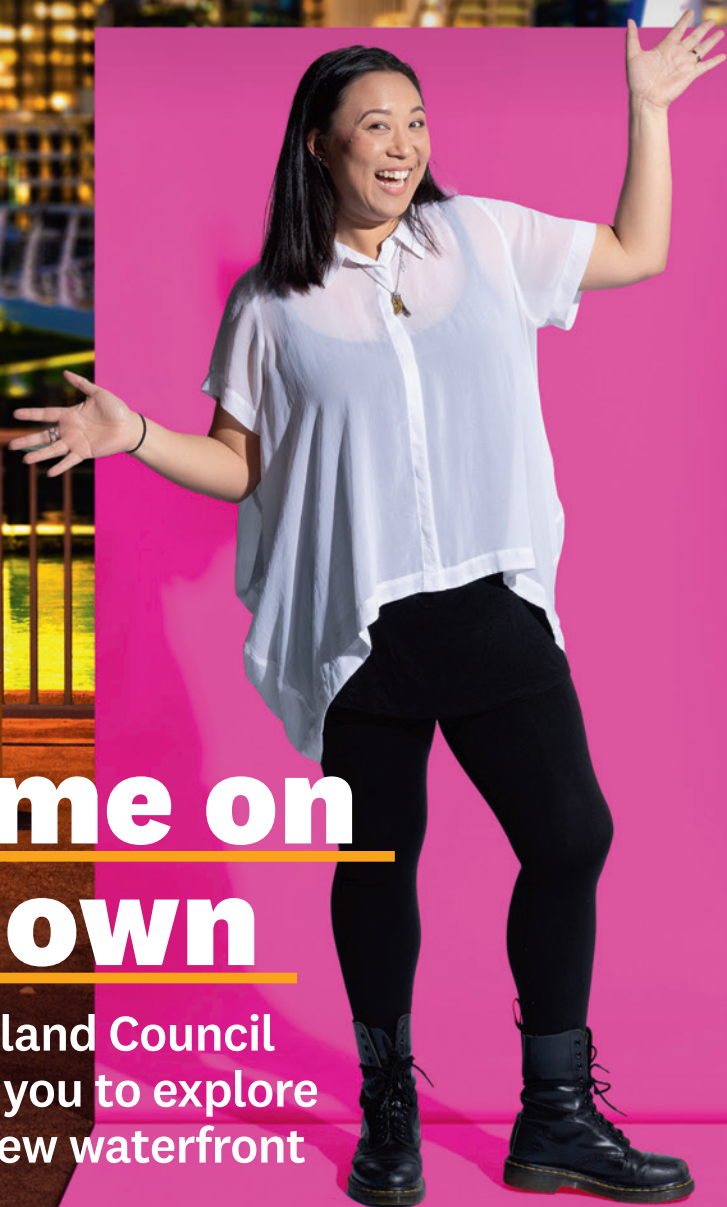


OUR Auckland

TŌ TĀTOU TĀMAKI MAKĀURAU

HŪRAE-ĀKUHATA JUL-AUG 2021 ISSUE 104

OURAUCKLAND.NZ



Come on down

Auckland Council
invites you to explore
your new waterfront

LATEST
PLAYGROUNDS:
The ultimate in fun

AN EYE
ON ART:
Who's behind
the city's newest
installations?



GET INTO IT! Shows, sports, events and more



EMPTY, RINSE AND RECYCLE RIGHT

Dropping dirty and unrinsed recycling into your Auckland Council recycling bin can contaminate the whole load.

Before you pop your items in the bin, make sure they're empty, rinsed and free of leftovers. Please check that there are no food scraps left in any packaging, such as pizza and takeaway boxes.

Help us to reduce waste and recycle right.

Visit [makethemostofwaste.co.nz/recycling](https://www.aucklandcouncil.govt.nz/makethemostofwaste.co.nz/recycling) to find out how to reduce your waste and recycle right.



Together we can protect our land and waste nothing.

CONTENTS



4
Mayor's Letter
Working for you.

5
The Briefing
Information and inspiration from Council HQ.

6-7
Local News
What's happening in your area.

9
My Tāmaki Makaurau
Insights from artist Tessa Harris, whose works can be seen around the city.

11
Family Space
Cool places for the little ones to play.
Plus: Did You Know?

20-21
What's On
Festivals, shows, free events and fun across the region.

23
Secret Spot
A peaceful seat with the best views of the Auckland skyline.

NEED TO KNOW

Auckland Transport is planning the next phase of its Safe Speeds programme, focusing on schools and rural areas with public consultation planned for September 2021. It will cover roads in the Franklin, Ōtara-Papatoetoe, Papakura, Manurewa and Waitemata local board areas. The first phase saw the Speed Limits Bylaw 2019 passed, which introduced safe, appropriate speed limits across the region.

Contact us

Auckland Council:
aucklandcouncil.govt.nz
09 301 0101 (24/7)
aucklandcouncil.govt.nz/contactus
Auckland Council, Private Bag 92300, Auckland 1142
facebook.com/aklcouncil
twitter.com/aklcouncil
About OurAuckland:
OurAuckland keeps you up

to date with council services, projects and events and helps to fulfil our legislative obligations to keep Aucklanders informed. We conduct regular research to ensure *OurAuckland* is an efficient way of doing this.
Te reo Māori: We're proud to use te reo Māori in *OurAuckland*. If you come across a word you don't know, you can learn what it means at [maoridictionary.co.nz](https://www.maoridictionary.co.nz)

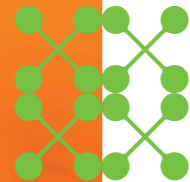
OurAuckland: [ourauckland.nz](https://www.ourauckland.nz)
ourauckland@aucklandcouncil.govt.nz

Designed by Storyation and published by Auckland Council. Printed by Ovato, using sustainably FSC sourced paper.



All information is correct at the time of going to print. Should event details change due to COVID-19 alert levels, please see our website, [ourauckland.nz](https://www.ourauckland.nz), for the most up-to-date information.

COVER PHOTO AND CONTENTS IMAGE / TONY NYBERG



From our Mayor

Central Auckland is undergoing a transformation with the completion of major projects that are making it a more vibrant, people-friendly and exciting place to live, work and visit.

In June, we celebrated the completion of the Karangahape Road upgrade, which has delivered wider footpaths, bike lanes, tree planting and rain gardens, as well as new public art, better street furniture and lighting and new bus lanes.

This was followed by the opening of the transformed Quay Street and Te Wānanga, the stunning new park on Auckland's waterfront. An impressive feat of engineering, Te Wānanga

seemingly floats above the harbour, with native planting offering shade and carbon absorption and openings in the deck revealing the movement of the tides.

These and other new public spaces – such as Te Komititanga, the new pedestrian square on lower Queen Street; the restored Chief Post Office; and Amey Daldy Park in Wynyard Quarter – are revitalising central Auckland, creating spaces for people to visit and enjoy and making our city centre a world-class destination for Aucklanders, New Zealanders and eventually for visitors from around the world.

Phil Goff, Mayor of Auckland



Discover OurAuckland.nz

Get weekly updates on news and events across Auckland at ourauckland.nz/enews

Follow us on social media: [@aklcouncil](#)

BY THE NUMBERS



16

equivalent lanes of motorway traffic can be moved at peak times when the City Rail Link is completed in 2024. This will help ease congestion and reduce emissions.

38

seeded mussel lines have been attached to the underside of Te Wānanga, the new public space that reaches out over the water in Quay Street. Each mature mussel will filter up to 150 to 200 litres of seawater a day taking in phytoplankton for nourishment as well as removing pollutants.

1600

eLearning video courses and tutorials are available to help you upgrade your technology, creative and business skills – all free with an Auckland library membership.



38,000

customers use Britomart Station every working weekday.



THE BRIEFING
Auckland Council news.

WATERFRONT SECURED

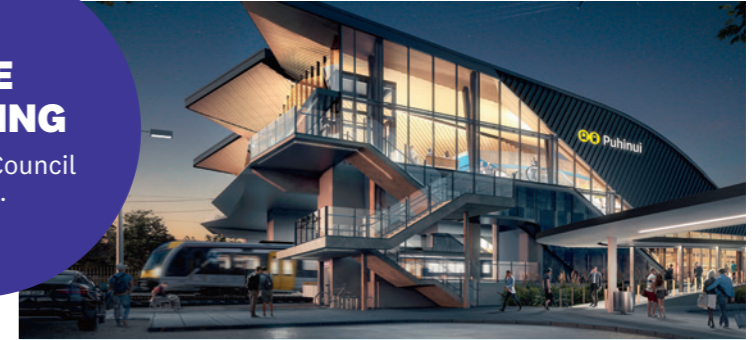
Strong foundations help build a great city foreshore.

For the past century, a strong, resilient barrier between land and sea has kept Auckland's downtown from being flooded. It's done its job well but needed upgrading.

Now, in a massive and complex engineering project, 600 metres of sea wall has been seismically strengthened. Running between Princes Wharf and Marsden Wharf, this protective coastal barrier will save our city from rising waters for at least another 100 years and was an important step in revitalising our waterfront area.

"This is a special place in Tāmaki Makaurau where people connect with the working waterfront – the ferries, the wharves, and Waitematā Harbour," says Eric van Essen, Downtown Programme Director.

"It's a hive of activity for transport, boating, shopping, dining and working. The sea wall is out of sight but it's literally the foundation of the edge of our downtown, and completion of this project is a milestone in the overall downtown Auckland transformation."



TRANSPORT HUB TO OPEN IN MANUKAU

The revamped station will help thousands commute.

Open from late July, the eye-catching new Puhinui Station is public transport like we haven't experienced before: a world-class commuter hub providing better travel connections in Auckland's southern suburbs.

"The upgraded Puhinui Station is going to transform the way people get to and from Auckland Airport. By connecting the rail network with new electric buses, it's only a 10-12 minute express trip to the airport from Puhinui Station – unlocking fast, frequent and easy journeys," says Shane Ellison, Auckland Transport Chief Executive.

As well as the new airport link, frequent bus and rail connections will help commuters to travel to the city centre. Shared paths on Lambie Drive and along Puhinui Road make it easier for commuters to walk or ride to the station.

Bike storage is available – just bring a lock. There are pick-up and drop-off zones for passengers destined for the airport, and short-term (60-minute) parking bays. Convenient all-day scooter and motorcycle parking is available too.

The \$65-\$70 million architectural landmark features mahi toi (artwork) and the use of te reo Māori throughout, thanks to a partnership with mana whenua.

For more information on Puhinui Station transport hub and bus services visit at.govt.nz



UPTOWN UPGRADE Karangahape Road boost.

Widened footpaths, two rainbow crossings, native trees, separated cycleways, bike parking, improved bus shelters and bus lanes, feature lighting and rain gardens to filter stormwater are all part of an enhanced Karangahape Road delivered by Auckland Transport. When you next visit this precinct, don't miss the tukutuku panels woven in steel, the colourful pāua shell inspired bus shelters and the silver discs inlaid into paving to symbolise the shell paths walked by Māori along this historic ridgeline centuries ago.

AROUND AUCKLAND



The latest from your community

In short

News and updates from all over the region.

Bike life:

A trial pop-up cycleway on Captain Scott Road leading to Glen Eden Town Centre is underway. Locals were involved in creating the trial, which will be in operation for up to a year. For more see akhaveyoursay.co.nz

Witness the fitness:

Three new fitness stations are in place at Panmure Basin. There are now 12 stations: have you tried the circuit?

Housing for kaumātua:

Three additional kaumātua housing units will be built at Papakura Marae after Papakura Local Board approval, taking the total to nine. “These homes will be filled by kaumātua who can share their knowledge, tikanga and wisdom. It will be like having living taonga on hand,” says Papakura Local Board Chair Brent Catchpole.

Bring to light:

The water feature located in Ellerslie Town Square (below) has been repaired, with coloured lights in place for summer.



Stream clean

Local boards join forces to protect the environment.

Running through Franklin, Papakura and Manurewa, Papakura Stream has united Auckland’s three southernmost local boards.

The Papakura Stream Restoration Project will be jointly funded by Franklin, Papakura and Manurewa local boards, which all have a strong environmental focus.

Franklin Chair Andy Baker says the project launch saw volunteers working with private landowners to restore wetland areas and protect kahikatea stands. The aim is to protect the water quality and the stream’s banks, a vital habitat for native species.

“The wetland was fenced to protect the stream and site from livestock, using posts made



from recycled soft plastic, an initiative sponsored by Mondelēz New Zealand.

“We’re going to need the support of the local and corporate community in the form of volunteering, sponsorship and partnerships,” Baker says.

“This is an ambitious project because it involves restoration on public and private land, working alongside farmers and other landowners.”



North Shore playgrounds

More fun for all.

Several renewal projects are getting underway across the Devonport-Takapuna Local

Board area, plus concept plans for new playgrounds are being prepared.

Additional play equipment has been approved for Takapuna’s Gould Reserve.

At Nile Reserve in Milford, plans are approved for an upgraded playground, and a new playground is being built in Devonport’s Melrose Reserve.

Sunnynook Park playground is being upgraded and a new plaza area added.

New toilet and changing facilities are in progress at Milford Reserve and completed near the preschool playground at Hauraki’s Lake Town Green, and there are safer new stairs at Castor Bay’s Kennedy Park.

BOY IMAGE / JAY FARNWORTH, VOLUNTEER IMAGE / BRYAN LOWE

At the hub

Takanini community facility now open to all.

Te Paataka Koorero o Takaanini – Takaanini Community Hub has opened in Takanini Village.

The \$2.9 million hub includes library and community services, computers, wifi, kitchen, study and bookable areas, and a children’s play space.

“The people in this community have been crying out for quality services, and it’s great that much of what is in the hub is thanks to their input,” says Papakura Local Board Chair Brent Catchpole.

Hub manager Dany Miller says the facility is more than a



library. “We hope people will take ownership and that it becomes the heart and soul of this community.”

Artist Johnson Witehira worked closely with Ted Ngataki of Ngāti Tamaoho and Kathleen Wilson of Te Ākitai Waiohūa to create window artworks based on the story of Taane and the basket of knowledge, a theme

carried throughout the building.

Mana whenua also gifted the name: the double vowel in Takaanini is the Te Ākitai Waiohūa preference. The name represents the area’s history and pays tribute to prominent chief Ihaka Takaanini, after whom the suburb is named, and who has descendants in the area today.



Local Board Chair Maria Meredith and Deputy Chair Chris Makoare.

History in pictures

A Panmure display connects past and present.

Have you seen the panoramic images on display in Panmure? Part of a photographic exhibit, they tell the story of the significant changes in the

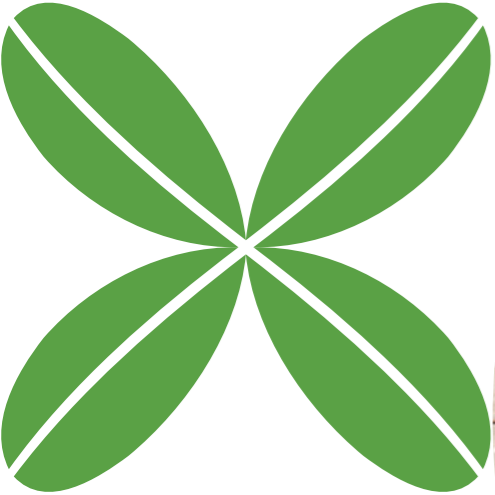
Maungakiekie-Tāmaki area over the past 100 years.

This part of Auckland has been central to the region’s growth and its connection to Tāmaki River and Manukau Harbour. The series showcases how Panmure, Mt Wellington, Penrose and Onehunga looked in 1920 (with photos by James Douglas Richardson) compared to 2020 (photos by Sam Hartnett).

Funded by Maungakiekie-Tāmaki Local Board and delivered by Eke Panuku Development Auckland, this exhibition helps tell a story of the area’s rich history and promotes a deeper sense of place.

“We are incredibly proud to help this impressive storytelling project come to life,” says Maungakiekie-Tāmaki Local Board Chair Maria Meredith. “It’s important to acknowledge the history of the area. Seeing them in place, providing a platform for ongoing conversation and enabling growth in our understanding of our local heritage, proves how valuable it is to support community projects like this.”

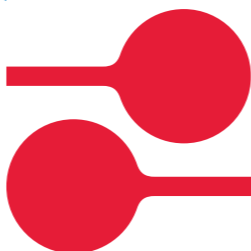
Where to see them: Next to the Panmure Library, 7 Pilkington Road, in front of the Panmure Community Hall car park. An additional display is on the Gentle Care Dentist wall (facing Pilkington Road) at 70 Queens Road.



Sign up to

myAUCKLAND

For quick, easy & secure access to manage your dog details, re-registrations, rates and other Auckland Council services.



Sign-up at aucklandcouncil.govt.nz/myauckland



FAMILY SPACE
Auckland's newest destination playgrounds.

TE WAI ŌREA LAKESIDE PARK WESTERN SPRINGS

Te Wai Ōrea Lakeside Park has a new ecology-themed playground featuring two giant slides, play zones doubling as learner cycling tracks, new equipment, seating, and shade sails. "The playground is a place for our tamariki to experience water, ecology, refuge, connection, events and history," says Waitemata Local Board Chair Richard Northey.

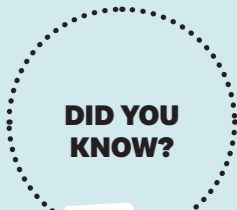
ARONIA PARK GOODWOOD HEIGHTS

Kids love colour and Aronia Park is a new rainbow playground in Manurewa's Goodwood Heights. It's got all the ingredients of a hit for kids of all ages: colourful slides, giant swings, a spinner, stepping stones, and a flying fox. Pack a picnic and enjoy your visit.



KOPUPAKA PLAYGROUND WESTGATE

A former strawberry field is now a new playground with all sorts of sweet features. Kopupaka Playground in Westgate has a great line-up of slides, swings, spinners, balancing and climbing fixtures, a flying fox, a sandpit area, water play features, bike and scooter paths and more. "It's definitely a place that young people in this fast-growing suburb are going to love growing up with," says Waitākere Councillor Shane Henderson.



Most disposable coffee cups are not recyclable

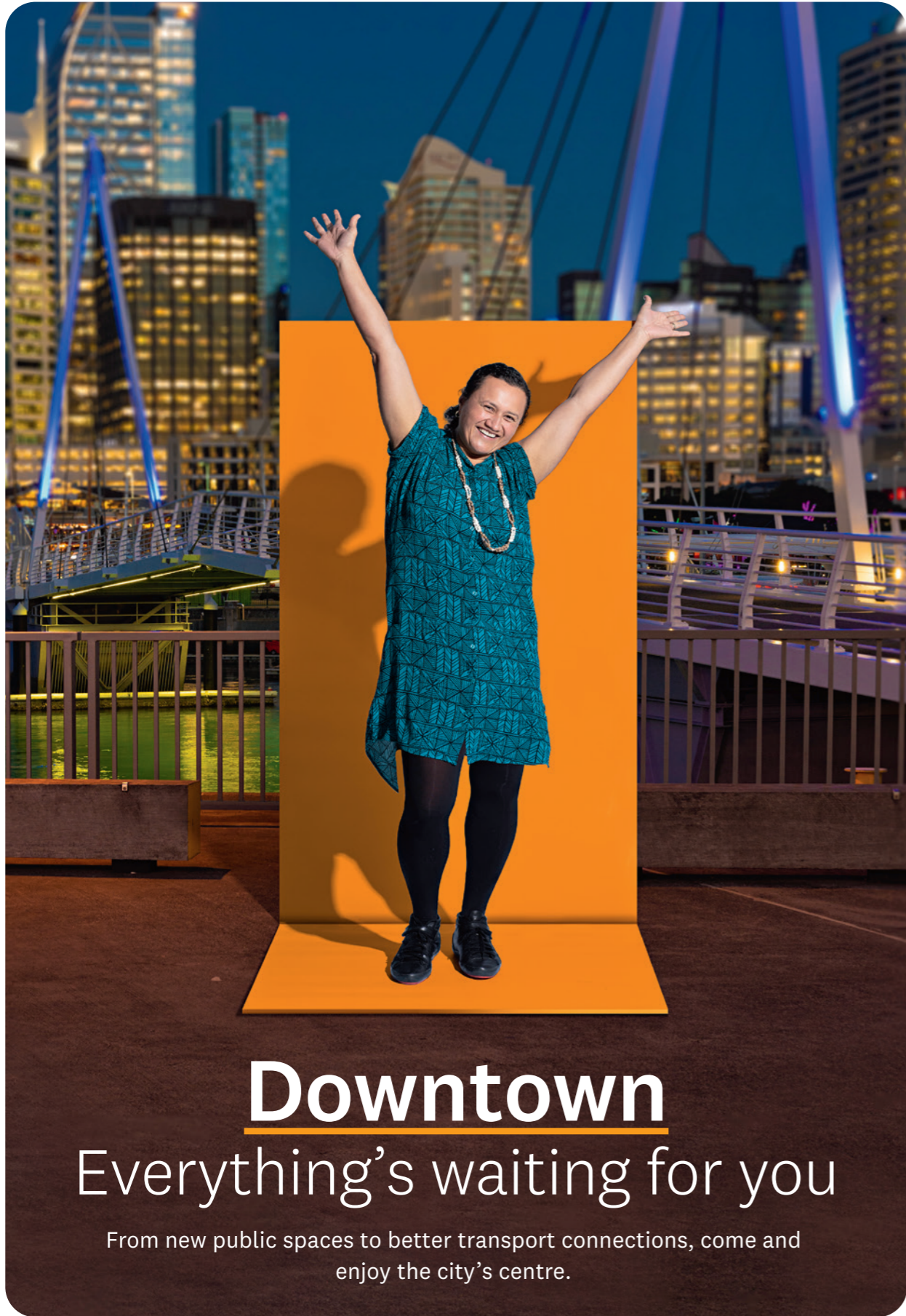
With their waterproof linings, and with milk residue often left behind, most paper coffee cups cause all sorts of problems if they enter the recycling system. Try these ideas instead:

- Bring your own mug from home or buy a reusable cup.
- Reuse a glass jar with a lid on it, like a sauce or peanut butter jar. Make a sleeve out of fabric for it if it gets too hot.
- Even better, take a moment to enjoy a cuppa at your favourite cafe.



Get funding for your waste-free ideas

The Kai Ika Project sees unwanted fish parts turned into kai. And Mahurangi Wastebusters transforms waste into resources. Now Auckland Council wants more ideas like these to help divert waste from landfill, and grants of up to \$50,000 are available. Find out more at aucklandcouncil.govt.nz/wastefund



Downtown

Everything's waiting for you

From new public spaces to better transport connections, come and enjoy the city's centre.

The heart of downtown Auckland, where land meets the sea, is on the threshold of a new era.

As gateway to thousands of commuters to the city centre every day, downtown Auckland has become a hub of arrival, departure and connection, designed around new public spaces built for people.

Together, Auckland Council, Auckland Transport, Eke Panuku Development Auckland and City Rail Link Ltd, in partnership with mana whenua, have reimagined Auckland's waterfront.

Artistic, ecological and cultural interpretation is embedded in every element: the function and beauty of rain gardens to manage stormwater, ropes of live mussels (kūtai) to clean the harbour and new ferry infrastructure with pontoons and gangways that rise and fall with the tides.

Auckland Council's vision to unlock the waterfront and connect it with the city and wider region is outlined in the City Centre Masterplan. Widely supported by Aucklanders and refreshed in 2020, the plan is coming to life.

It aims to shape a greener, more vibrant and more dynamic city centre that is uniquely Tāmaki Makaurau; a place where people can thrive.

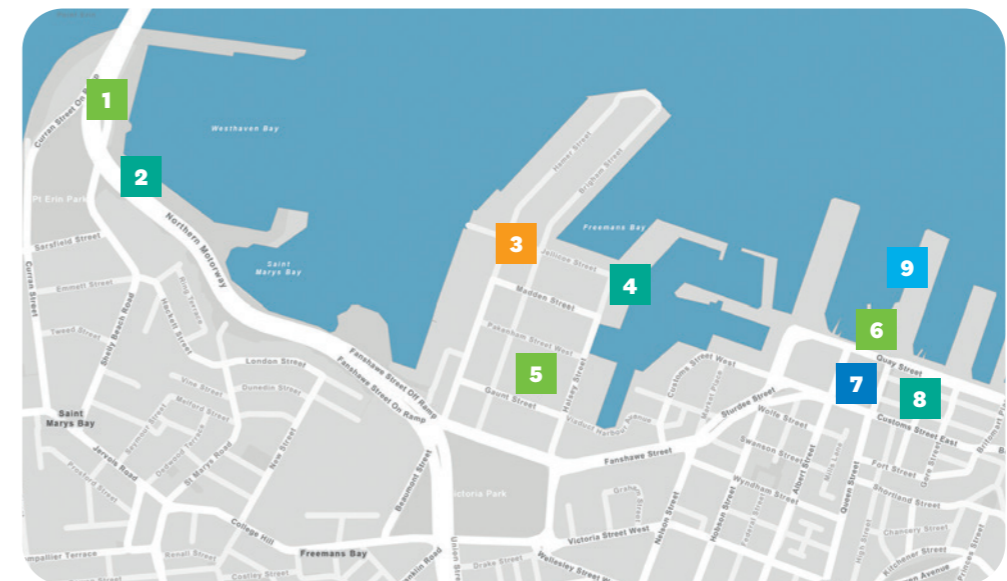
Chair of the Planning Committee Councillor Chris Darby says the downtown improvements respond to the needs of a fast-growing city centre.

"Around 7.2 per cent of New Zealand's economy is generated here and nearly 40,000 people live here. This is now the best-connected square mile in Aotearoa," says Darby.

The programme has not only strengthened the sea wall, protecting the city for the next 100 years from rising sea levels and seismic events, it has also revitalised Quay Street and Galway Street. A new bus interchange has been positioned in Lower Albert Street and six new ferry berths have been added to Queens Wharf.

The city centre is for everyone. Around 1.7 million people live in the Auckland region. Over the next 30 years this number is predicted to grow by another 720,000 people to reach 2.4 million, many commuting to the city centre by bus, train, ferry, cycle, e-scooter and on foot.

Whether you're walking, cycling, or taking the bus, train or ferry, we invite you to grab your HOP card and discover some of the exciting new places in downtown.



- 1 MARINA VILLAGE
- 2 WESTHAVEN PROMENADE
- 3 SILO PARK EXTENSION
- 4 WYNYARD QUARTER
- 5 AMEY DALDY PARK
- 6 TE WĀNANGA
- 7 TE KOMITITANGA
- 8 GALWAY STREET
- 9 TE NGAU O HOROTIU

IMAGES / TONY NYBERG



Te Wānanga / Quay Street



**MARJORY
TOLHURST**

I have seen a big improvement in Wynyard Quarter over the past decade: before it was a dreary place, now it is lively and attractive. I enjoy looking at the boats by the wharf and walking over the drawbridge to the Viaduct. By the ferry terminal, I'm looking forward to seeing a walkway along the waterfront so people can enjoy this part too.



WALK

TE WĀNANGA

The jewel in the crown of downtown is the remarkable Te Wānanga. Seeming to float above the harbour, this new public space between Princes and Queens Wharves resembles a tidal shelf. Designed for both human and natural ecologies, it forms a living hinge between the land and the sea, shaped to reflect the organic form of the rocky edges and sandstone headlands of the Waitematā. A growing urban forest (ngahere) and native planting offer shade, shelter and carbon absorption while openings in the deck reveal the movement of the tides below. An impressive piece of engineering, the project required a complex latticework of reinforced steel and piles supporting the concrete platform, and steel planters weighing up to 22 tonnes. Barry Potter, Auckland Council's Director of Infrastructure and Environmental Services, who led the team working alongside mana whenua to develop the space, says this is a place where Aucklanders can now see, hear and feel the city's relationship with the sea.



LUKE NICHOLAS

I have been away from New Zealand for several years and coming back and seeing the land opened up to the public has really transformed Auckland into a truly international city. I really like seeing Aucklanders enjoying the spaces, bars, restaurants and waterfront. That's what it's all about.



TE NGAU O HOROTIU

Our striking new ferry landing, Te Ngau o Horotiu, is the biggest upgrade to Auckland's ferry infrastructure and passenger services in over a century. On the underside of the soaring canopies is a pattern of triangular motifs, created by artist Maaka Potini (Ngāti Tamaoho). The artwork, *Ra Matua, Ra Kei*, illustrates the sails of waka hourua (traditional Māori double-hulled sea canoe) and acknowledges the many migrations to Aotearoa from the Pacific.

GALWAY STREET

Located in the lower reaches of downtown Auckland, Galway Street has been transformed into a stunning new shared space. The charming urban street is now lined with lush planters. It provides a pedestrian link for residents and visitors to walk through to the new downtown city square Te Komititanga, to Commercial Bay and the Waitematā waterfront.



Galway Street





Te Komititanga / Chief Post Office



SARAH PACEY

The area along Quay Street and Britomart really welcomes all into the CBD. It's open and expansive and has retained some beautiful historical architecture, which has now become more obvious. When we first moved to Auckland there was nothing but warehouses and the seafood markets. Now it's bustling with eateries, bars and world-class walkways.



TE KOMITITANGA

This magnificent city square is a place for music events, arts, vibrant light shows, large projections, festivals and civic events. Its name reflects the mixing of people, converging from multiple transport points, and the place where the waters of the Waitematā and Wai Horotiu Stream merge. The square features 37,000 individual pieces of basalt pavers laid in a pattern by mana

whenua artist Tessa Harris (Ngāi Tai ki Tāmaki, see page 9) and her team of weavers to depict a whāriki (welcome mat) made from harakeke (flax). The paving also marks the original shoreline and symbolises the journey of Wai Horotiu Stream to the sea. The square provides a bridge between old and new – the majestic Chief Post Office building stands on one side, and the contemporary architecture of Commercial Bay is on the other.



VISIT

CHIEF POST OFFICE

The restored 109-year-old Chief Post Office (seen opposite) is now the main entrance to Britomart Transport Centre. It features a beautiful stained-glass dome, while the original foundations are shown encased in glass, telling the building's extensive story. In a complex feat of engineering, the building's weight was transferred to new foundations, protecting the Category A-listed heritage building for the future. Barry Potter says it was a major engineering and

construction achievement. "The result is this stunning historic space, restored to its former glory, that people really enjoy using as they catch their trains."

WYNYARD QUARTER

August will mark 10 years since Auckland Council's development wing Eke Panuku began regenerating this industrial land into the city's liveliest waterfront neighbourhood. "We are developing new spaces to attract both established and new events, and we're looking forward to planning more public spaces where the tank farm used to be," says Eke Panuku's Fiona Knox.



Wynyard Quarter



DOROTHY IOSIA

Ten years ago I don't recall going anywhere near here but slowly it's beginning to form a really awesome space that flows from one area to the next, so I look forward to the next steps. I think it's retained the right amount of personality and I love the thoughtful design that should give Aucklanders a sense of pride but also shows creativity, diversity and fun.



SILO PARK EXTENSION

Silo Park (right) is one of Auckland’s favourite destinations. The Silo 6-pack and Silo 7 are iconic parts of our waterfront used for outdoor events, outdoor cinema and art and exhibition spaces. Come and see the award-winning pavilion designed by Ngāi Tai ki Tāmaki artist Tessa Harris, called *Te Nukuao* (shelter), which reinforces the connection between the land, sea and seagoing voyages.

AMEY DALDY PARK

A communal backyard for those who live and work in Wynyard Quarter, our newest pocket park offers a little green oasis along Daldy Street with trees, shade and places to play. Named for celebrated human rights and women’s rights campaigner Amey Daldy, the park incorporates a specially designed wastewater pump station that reflects the nearby silos, with its curved walls also cleverly housing public restrooms.

TANIA PRISCOTT

I like Wynyard Quarter and Silo Park. I have been there for many social occasions. It definitely feels like the space has really come alive as it’s being utilised for more and more events over the years. I like downtown’s switch of scene from the city: it feels like less of the hustle and bustle of the CBD.



LAUREN CLARK
Silo Park, with the playground, is great for kids and on a sunny day it’s nice to bike along Wynyard Quarter, have a play and a bite to eat or drink. There have been a lot of developments for the better in the Wynyard Quarter area and developing areas such as Britomart have been awesome.



RIDE

WESTHAVEN PROMENADE

This 2km promenade from west of Auckland Harbour Bridge to Wynyard Quarter, brought to the city centre by Eke Panuku, is a safe, flat bike ride, and suitable for families. Eke Panuku’s Fiona Knox says the

promenade is more than a picturesque coastal path. “This is the last piece of the puzzle connecting this part of the city centre with adjoining neighbourhoods, offering a continuous space where people can exercise, commute and get close to the water,” says Knox. “It has also opened up unprecedented access to Westhaven, the Southern Hemisphere’s largest recreational marina.”

WHAT'S ON JULY-AUGUST 2021

PLEASE FOLLOW GOVERNMENT ADVICE ON COVID-19 ALERT LEVEL CHANGES AND VISIT [OURAUCKLAND.NZ/EVENTS](https://ourauckland.nz/events) FOR UP-TO-DATE EVENT INFORMATION.



Show off your moves, learn to skate or take an exhilarating ride on the ice slide in the heart of the city centre at **Aotea Square Ice Rink & Slide** (until 1 Aug).

Sea Monsters (7 Jul – 25 Oct) is an exhibition that will delight all ages with displays of prehistoric ocean predators, real fossils from millions of years ago and gigantic replicas at Auckland War Memorial Museum in Parnell.



To keep the kids entertained over the **Winter School Holidays** (10-25 Jul), visit ourauckland.nz/schoolholidays for lots of fun, local and affordable activities across the region.

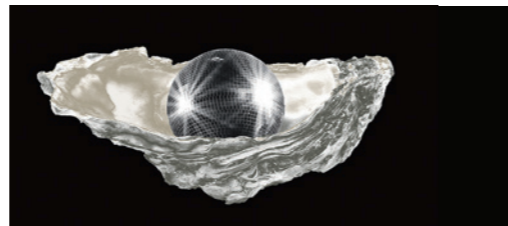
From disco to delicious, and high-end ticketed experiences to free events, **Elemental AKL Festival** (14 Jul – 1 Aug) is a collection of events celebrating culture, cuisine and creativity. Here are some of the highlights:

East Auckland Art Trail (14 Jul – 1 Aug) has a variety of free art exhibitions, workshops, demonstrations and more at venues from Pakuranga to Clevedon.

Takurua – Battle of the Brothers (Fri 16, Sat 17, Fri 23 & Sat 24 Jul) is a unique cultural experience synthesising hospitality, theatre and dance at Aotea Centre in the city centre.

Interesting Places: The Subterranean Sessions (Sat 17 & Sun 18 Jul) is a series of intimate performances in the historic tunnels of Fortress Stony Batter on Waiheke Island.

An Auckland Food Story (Tue 20 & 27 Jul) at Ahi restaurant in the city centre showcases food



from our region and celebrates those who grow, nurture and create what appears on the menu.

Featuring 12 of Auckland's finest dancers, **Ballet Noir** (Fri 23 & Sat 24 Jul) is an exquisite blend of dance, music, filmic imagery and fantasy at Bruce Mason Centre in Takapuna.

Elemental Nights (16-30 Jul) is an elite concert series with an impressive line-up of local and international artists in the city centre, Avondale and Titirangi.

Takapuna Winter Lights (Fri 30 & Sat 31 Jul) is a free, all-ages extravaganza with art installations, illuminations and entertainment at Hurstmere Green.



Based on the DreamWorks animated motion picture, **Madagascar the Musical** (8-18 Jul) is a fun-filled family musical with outlandish characters and an upbeat score at Aotea Centre in the city centre.



Help rangers and other volunteers to plant trees this winter at **Shakespear Regional Park Planting Day** (Sun 18 & 25 Jul), **Mutukaroa Regional Park Planting Day** (Sat 24 Jul), **Tāwharanui Regional Park Planting Day** (Sun 1 Aug) and **Waitawa Regional Park Planting Day** (Sat 17 Jul, Sun 1 Aug & Sun 8 Aug).

The free **Auckland Zinefest Market** (Sat 31 Jul & Sun 1 Aug) is on at Auckland Art Gallery Toi o Tāmaki in the city centre with works from zine makers and artists from around New Zealand.

Restaurant Month (1-31 Aug) returns to the city centre with more than 100 restaurants on board, special menus at \$25, \$40 and \$55+, and unique dining events to tempt your tastebuds.



Be a part of the next chapter of trans-Tasman rivalry at Eden Park with the **All Blacks v Australia** (Sat 7 Aug), the opening Bledisloe Cup match presented by Steinlager.

VISIT [OURAUCKLAND.NZ/EVENTS](https://ourauckland.nz/events) FOR DETAILS ABOUT THESE EVENTS & MORE



How to Train Your Dragon – In Concert (Fri 6 & Sat 7 Aug) is a thrilling experience for all ages at Aotea Centre in the city centre. See the acclaimed film accompanied live by Auckland Philharmonia Orchestra.

See future-tech-themed films at **MOTAT's Movie Night Series: Visions of the Future** (Fri 6, 13, 20 & 27 Aug). Each ticket includes a movie screening, popcorn and candy floss.

Auckland Theatre Company presents the world premiere of **Things That Matter** (17-29 Aug) at ASB Waterfront Theatre in Wynyard Quarter. This play was adapted from the memoir of Dr David Galler, who worked for more than 30 years on the frontlines of New Zealand's health system.

Based on the smash-hit film, **The Wedding Singer** (26 Aug – 19 Sep) is a hilarious musical comedy that celebrates all the fun of the '80s at The Civic in the city centre.

Auckland Council Libraries and Genealogical Computing Group present the free **Auckland Family History Expo** (Sat 14 & Sun 15 Aug), offering seminars, tutorials, expert sessions and more at Fickling Convention Centre in Three Kings.



With a focus on fashion that can be reused, repurposed and recycled, **New Zealand Fashion Week** (23-29 Aug) returns to celebrate its 20th anniversary with a packed schedule of events at Auckland Town Hall and Aotea Square in the city centre.

MOTAT

LOVE SCIENCE

NEW EXHIBITION / ON NOW

EXPERIENCE THE STORIES BEHIND THE TECHNOLOGY

MOTAT.NZ

JOIN US THIS SCHOOL HOLIDAYS

||

EXCLUSIVE TOURS

||

HOSTED BY
ALL BLACKS LEGENDS

BOOK NOW AT
EXPERIENCEALLBLACKS.COM

@EXPERIENCEALLBLACKS

ALL BLACKS EXPERIENCE

Best Retirement Village on the North Shore

Come for the lifestyle stay for the care

Give your aged parents **the luxury they deserve**

Belmont Lifestyle Village is set in attractive landscaped gardens. We offer independent living to full time care in our architecturally purpose designed serviced and non serviced luxury spacious apartments.

The common areas include a multi activity room with movie theatre, lounges, restaurant and beauty salon. Outdoor areas include a large patio, water features with garden seating and walking paths through trees and attractively planted landscaped gardens.

As Belmont Retirement Village is a boutique village, residents and staff are treated as family. **We are small enough to care.**

Moving to Belmont will enhance your life, enjoying fun through social activities, making new friends and feeling secure and safe. Everything you need, want and love.

APARTMENTS AVAILABLE FROM **\$420,000**

Call to inspect our friendly boutique village where personal care and residents welfare is our concern.

BY APPOINTMENT ONLY

BELMONT LIFESTYLE VILLAGE

Locally owned and operated

12 Coronation Street, Belmont PH 486 8042 or 021 056 8147

SECRET SPOT

LOUNGERS ST MARYS BAY

Location: Westhaven Drive, St Marys Bay.

Along Westhaven Drive, halfway between Westhaven Beach and Westhaven Marina Boat Ramp, you'll find four recliners discreetly located under pōhutukawa trees. They offer one of the best seats in the city, a place to relax, take in the metropolis views, read a book or watch the boats as they come and go. Bring the family and enjoy a picnic.

Colours of Hidden Auckland

Enjoy the tones of Tāmaki Makaurau at home all year round

- Resene Sea Fog
- Resene Pohutukawa
- Resene Happy Hour
- Resene Coast
- Resene Escape
- Resene Float
- Resene New Leaf

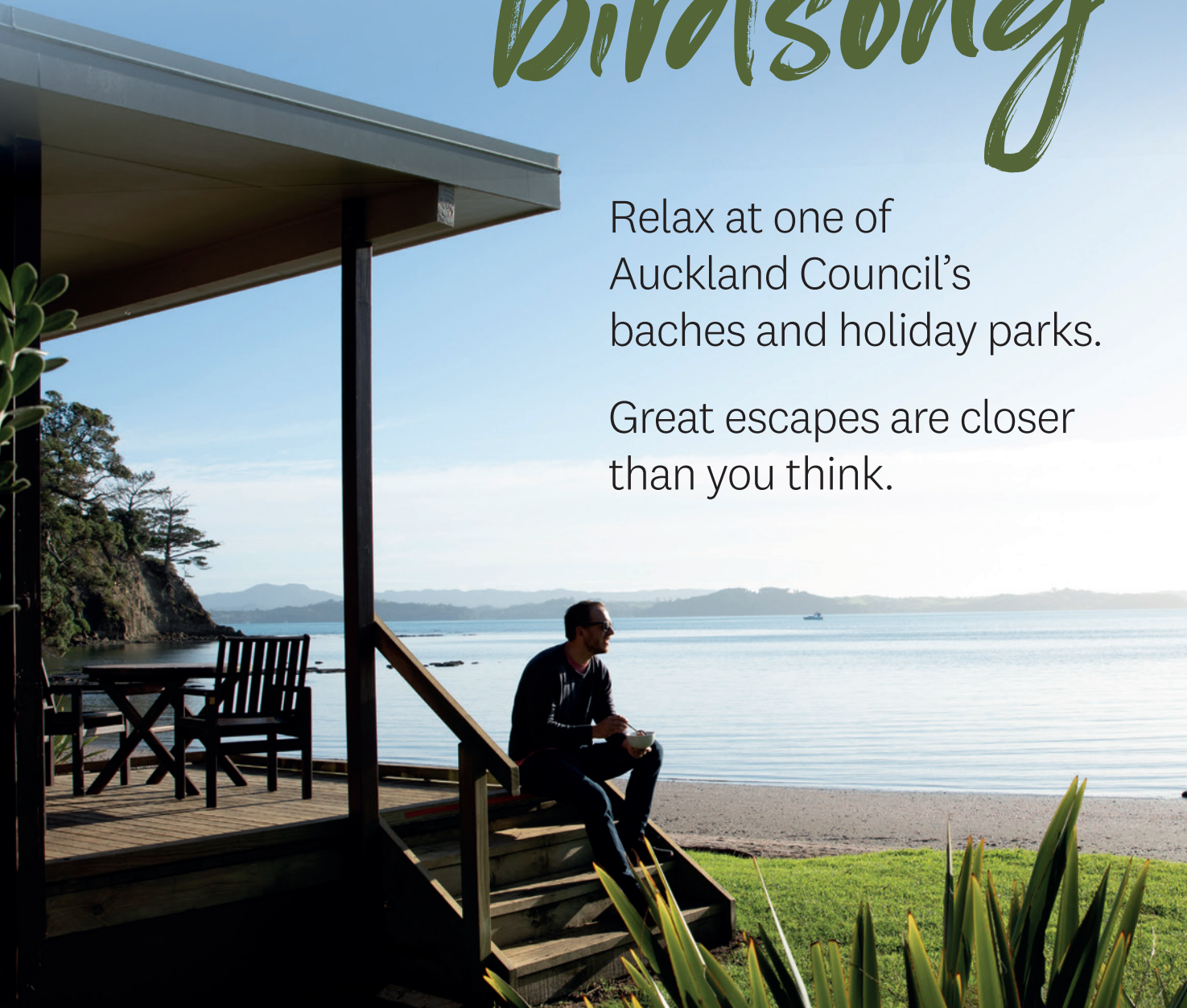
Resene
the paint the professionals use



55 MINUTES FROM DESK TO *birdsong*

Relax at one of
Auckland Council's
baches and holiday parks.

Great escapes are closer
than you think.



AUCKLAND COUNCIL **HOLIDAY PLACES**

Book your escape today
aucklandcouncil.govt.nz/holidayplaces

