

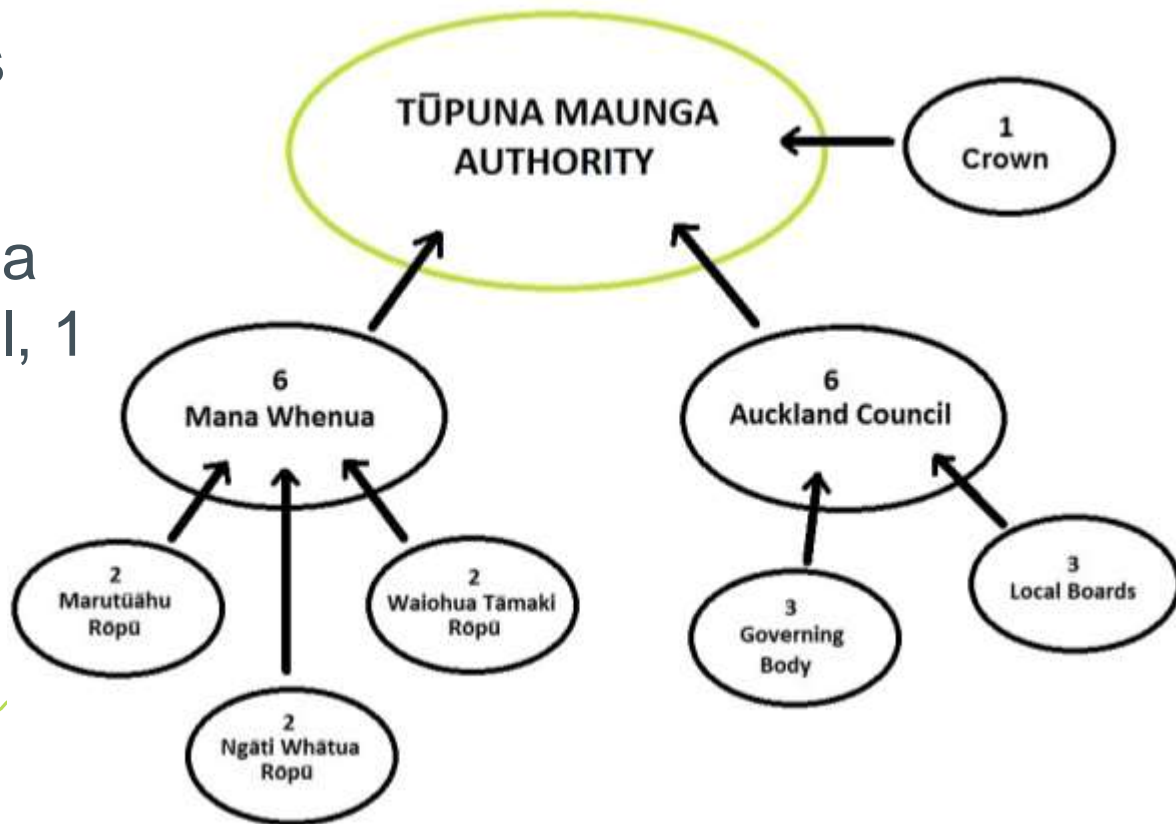


# Tūpuna Maunga

- Tāmaki Collective Treaty settlement (enacted Aug 2014)
- 14 Tūpuna Maunga returned to the 13 Mana Whenua iwi/hapū of Auckland via the Tūpuna Taonga Trust
- Tūpuna Maunga Authority:
  - co-governance between Mana Whenua and Council
  - 6 (3 rōpū x 2) + 6 (3 GB & 3 LB)



- Tūpuna Maunga Authority manages
- Authority is ½ Mana whenua ½ Council, 1 Crown observer



# Tūpuna Maunga Authority



In exercising its powers and carrying out its functions in relation to the maunga, the Maunga Authority must have regard to—  
(a) the spiritual, ancestral, cultural, customary, and historical significance of the maunga to Ngā Mana Whenua o Tāmaki Makaurau; and

The maunga is held by the trustee for the common benefit of Ngā Mana Whenua o Tāmaki Makaurau and the other people of Auckland.

# Day 0

- Parks and volcanic cones
- Mana Whenua a 'stakeholder'
- Care and respect for Maunga the exception
- Inconsistent separate management plans
- No dedicated management regime and/or maintenance programme
- Ad hoc oversight of activities including pest control and restoration

# Year 5

- Tūpuna Maunga – the lens and language is changing
- Co-governance – Mana Whenua at the table / culture of consensus
- Alcohol and smoke free policy; aggressive pest eradication; weed removal programme; stock removal; shared spaces
- Single integrated management plan
- Dedicated Maunga management team and maintenance programme

# They're not parks, they're Tūpuna Maunga



# Healing the maunga





# People not vehicles



# Cultural restoration not ecological restoration



# Community Involvement





Wairaka / Te Ahi-Kā-A-Rakataura  
Mount Albert

Maungawhau  
Mount Eden

Ohinerau  
Mount Hobson

Te Kōpuke / Titikōpuke  
Mount St John

Maungarei  
Mount Wellington

Ōhūiarangi  
Pigeon Mountain

Te Tātua-A-Riukiuta  
Big King

Maungakiekie  
One Tree Hill

Puketāpapa / Pukewīwi  
Mount Roskill

Ōtāhuhu  
Mount Richmond

Te Ara Pueru / Te Pāne-O-Mataaho  
Māngere Mountain

Matukutūruru  
Wiri Mountain

Tūpuna Maunga  
School  
Puna Reo or Kōhanga Reo  
Kura Rumaki Reo and Kura Kaupapa Māori  
University or Private Training Establishment

# Looking ahead



# Looking Ahead



**LOVE YOUR MAUNGA**

**FREE EVENT**  
Sat 16 February  
11am – 3pm  
Māngere Mountain  
Māngere

A community celebration of Māngere Mountain and the Tūpuna Maunga (ancestral mountains) of Tāmaki Makaurau

LIVE on stage  
**Che Fu and the Kratez**  
**Lavina Williams**  
Yorke  
Grace Ikenasio  
Skylah  
Kapahaka and more

Food stalls  
Craft markets  
Kids Zone

@ Tūpuna Maunga Authority  
Brought to you by

[www.facebook.com/LoveYourMaunga](https://www.facebook.com/LoveYourMaunga)

The logo for Tūpuna Maunga Authority, featuring a stylized green mountain peak composed of vertical lines of varying heights, with the text 'Tūpuna Maunga Authority' to its right.

# Looking ahead

- Track improvements
- Visitor facilities
- Vegetation programme
- Removal of redundant infrastructure
- Maunga strategies & individual Maunga plans
- World Heritage bid





**‘Maunga tū Maunga ora,  
Maunga ora Tāmaki Ora’**

**‘If the Maunga are well then  
Tāmaki Makaurau is well’**