

Sam Hill  
Auckland Council

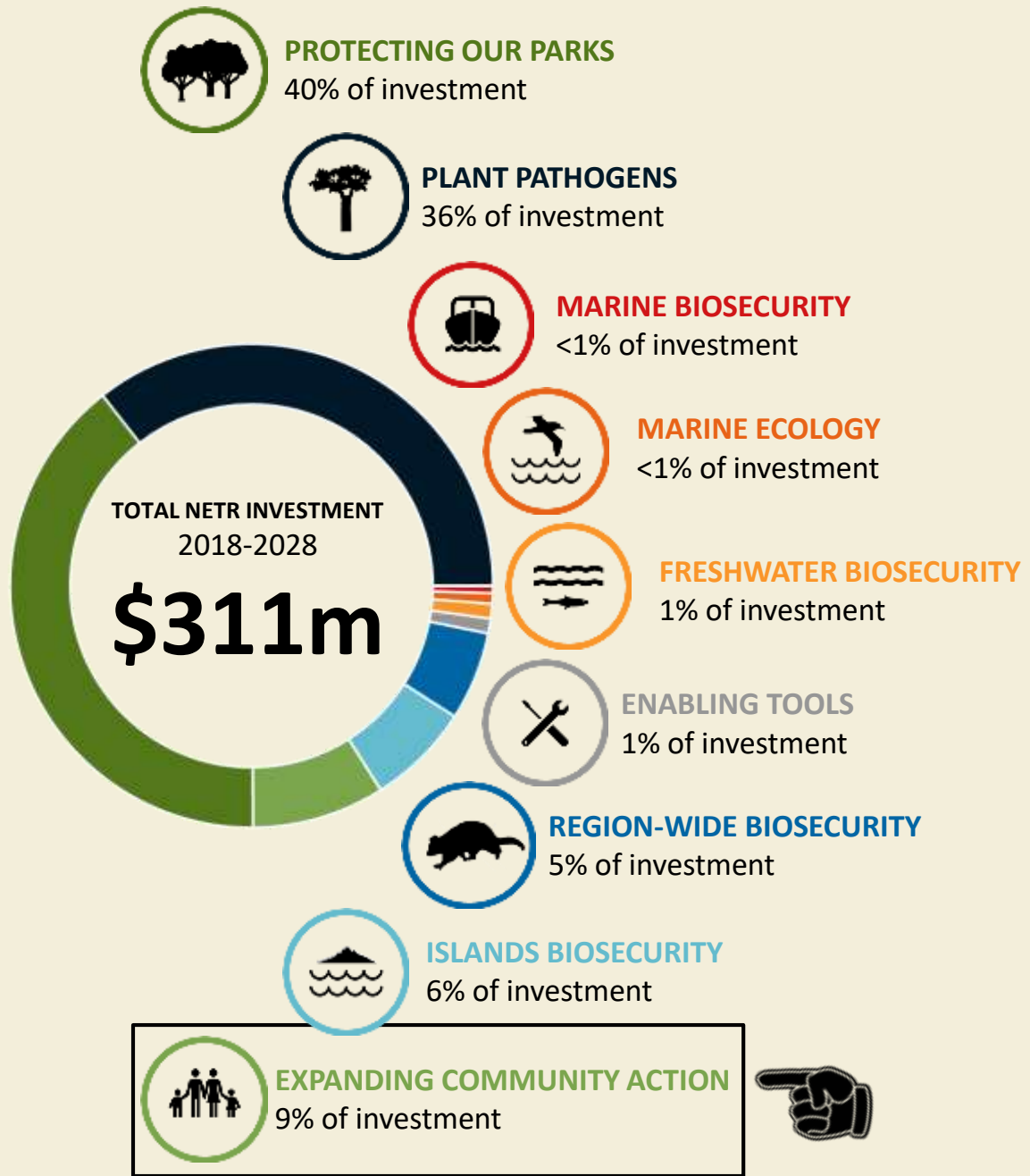
# Supporting community-powered conservation through the Natural Environment Targeted Rate



# Auckland's wildlife is flourishing; treasured and protected by everyone



## Why?



# Natural Environment Targeted Rate (NETR)

2018-2028 investment breakdown





Strategic restoration

Funding

Place-based networking

Biodiversity on private land

Tools

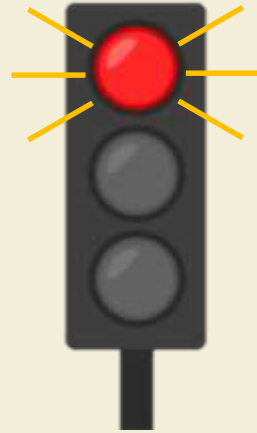
Innovation

Partnerships

Capability

Conservation story

Digital access



# We heard...





Connectivity tool

Sub-regional/local events programme

Increased existing and created new funding

Priority places on private land

Tools and resources

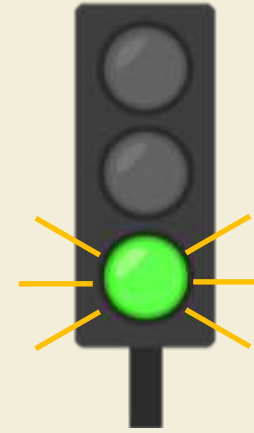
9Wire

Partnerships

Learning/capability programme

Campaigns, media, understanding our audience

New digital portal



So we...





# An enabling, needs-based support package





- Partnership, collaboration and involvement
- Empower communities to lead and participate at place
- Enable others to act
- Amplification – grow, not replace existing efforts
- Reduce bureaucracy, the ‘cost to serve’ and enhance the customer experience
- Prioritisation for biodiversity outcomes

# Principles





*"The new Restoration Advisors are fantastic!"*



*"The increased funding for coordination and admin enables us to effectively plan and to produce quality reports showing what we have achieved"*

Tools support (\$489,000 to 47 projects)

RENH boost (\$200,000 provided additional funding for 29 projects)

An expanded 'Pest Free' programme with EnviroSchools



*"It was great to meet others on the same journey as us – and to learn from those further along"*



More 'Pest Free' activations on Local Parks

New CCF Grant (\$740,000 to 34 projects/applicants)

# How has it helped so far?...





- Building on what has already been started...
- A clearer Council service offering with improved access to support and guidance
- More collaborative funding and easier funding processes
- Partnerships with Iwi
- Ongoing support for tools
- More placed-based support
- Involving the private sector and businesses
- Improved communications
- Listen, evaluate and adapt

**What's next?**



Kei whea te korimako e koo?



Where will the bellbird sing?



pestfree@aucklandcouncil.govt.nz



fb.com/aklbiodiversity



aucklandcouncil.govt.nz

**Stay  
connected**

