

10-year Budget 2021-2031

Have Your Say on improving the water quality in your local streams, Hobson Bay and the Waitematā Harbour

Sunday 7 March 2021

Hosted by Ōrākei Local Board & Waitematā Local Board

Purpose

- To inform the community on changes proposed to the Water Quality Targeted Rate.
- To **HEAR FROM YOU** today and through written submissions to the Long-term Plan 2021-2031 consultation.



Karakia Tīmatanga - Opening Karakia

Whakataka te hau ki te uru

Whakataka te hau ki te tonga

Kia mākinakina ki uta

Kia mātaratara ki tai

Kia hī ake ana te atakura

He tio, he hua, he hauhū

Tihei mauri ora!

*Get ready for the westerly
and be prepared for the southerly.*

*It will be icy cold inland,
and icy cold on the shore.*

*May the dawn rise red-tipped on ice,
on snow, on frost.*



Who we will be hearing from

- Ward Councillors
 - Waitematā and gulf
 - Ōrākei
- Local Boards
 - Ōrākei
 - Waitematā
- Subject matter experts
 - Watercare
 - Healthy Waters
- The community!



What to expect

1. Intro to 10-year Budget and Water Quality Targeted Rate (WQTR)
2. LB priorities and advocacies in relation to water
3. WQTR technical info: investment, timelines, impact on LB areas)
4. Q&A and Have Your Say

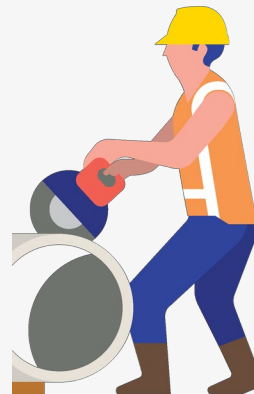
Please...

- *Microphones muted*
- *Elected members and presenter cameras on*
- *Write questions in chat bar*
- *Recording session*



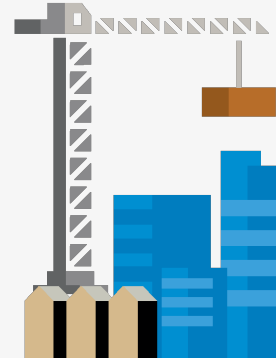
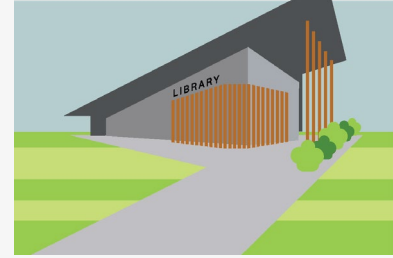
What is a 10-year Budget?

- Councils across the country prepare 10-year budgets (often called long-term plans) each three years
- These look at the activities the council will focus on and how they will fund them
- Consultation with the community is a key part of the process and
- Your input will support the elected members in their final decisions
- A final budget will be adopted in June 2021



Key regional issues

- Key issue 1: Proposed investment package
- Key issue 2: Responding to climate change
- Key issue 3: Responding to housing and growth
- Key issue 4: Investment in our community
- **Key issue 5: Protecting and enhancing the environment**



Our Recovery Budget



Key issue 5. Protecting and enhancing the environment

We are proposing to extend and increase our investment in improving water quality and our natural environment



Water Quality Targeted Rate

We are proposing to:

- Extend the targeted rate from 2028 to 2031 which will allow us to start work in other parts of the city
- Increase the targeted rate each year in line with the projected average increase in general rates

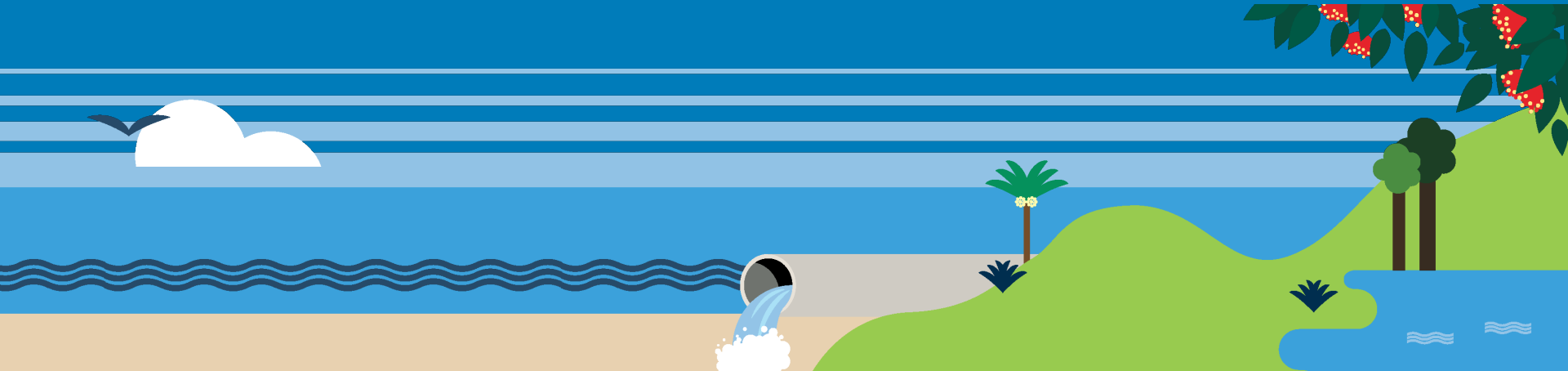
This will enable:

- Improved water quality in the Manukau Harbour, Tāmaki Estuary and beaches between Parnell and Glendowie.
- Litter trap (stormwater treatment) projects to improve water across the region



Why is this important?

What this means to your local area.



Waitematā Outcome 4: Waitematā is future-focused, green and resilient to climate change

- We will partner with mana whenua on projects aimed at protecting and restoring our environment and reviving the mauri of our waterways.
- Support local stream restoration such as in the Waipapa, Waiparuru and Newmarket streams
- Support programmes that seek to improve biodiversity in the Hauraki Gulf, and investigate how we can reduce contaminant runoff from roads into our rivers, streams and harbours
- Advocate for increased funding to improve the environmental quality and biodiversity of the Hauraki Gulf and support developing mechanisms for sustaining and enhancing marine life in the gulf.



Ōrākei Outcome 2: Our land, forests, waterways and marine environment are protected, restored and enhanced

- Practise kaitiakitanga (guardianship), working with mana whenua, Watercare, Healthy Waters, schools and local communities to improve the quality of marine, coastal and freshwater environments and provide education opportunities
- Advocate for more water testing stations in all major streams and encourage the community to help with regular monitoring, with the results available publicly
- Work with Ngāti Whātua Ōrākei and groups, such as the Hauraki Gulf Forum, University of Auckland, Hapua Thrive, Tāhuna Tōrea Rangers and the Tāmaki Estuary Environment Forum to clean up Ōkahu Bay, Hobson Bay, the Tāmaki Estuary and all the eastern bays and their inland catchments
- Continue to enhance waterways and wetland areas, such as Ōrākei Basin, Waiatarua Reserve, Stonefields / Maungarei Springs and all streams across the local board area



Advocacy from local boards

Waitematā Local Board

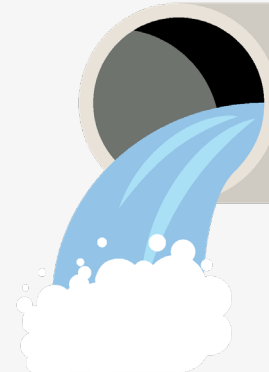
Increase funding for water quality improvements.

We are advocating for increased funding to accelerate improvements to our stormwater / wastewater systems. This will address pollution in our waterways and bays, including, particularly Hobson Bay, and help achieve cleaner harbours, beaches and streams.

Ōrākei Local Board

Hobson Bay catchment wastewater/stormwater separation

We are advocating to the Governing Body to accelerate separation works for the Remuera catchment and for this project to begin following the completion of the Ōrākei/Ōkahu Bay separation and improve water quality at Hobson Bay.



We need your support



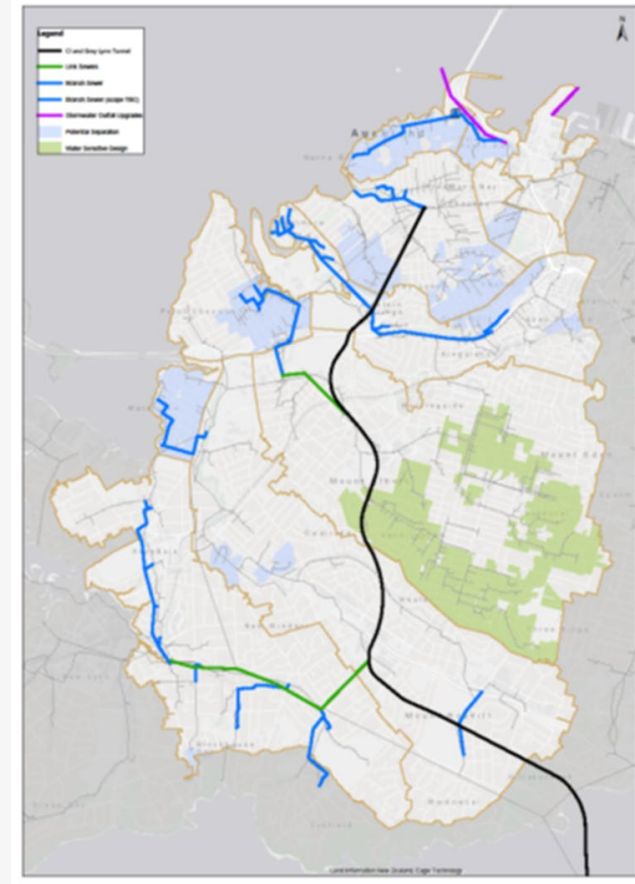
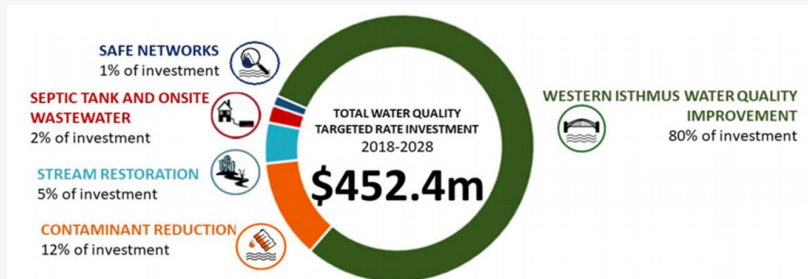
What is the Water Quality Targeted Rate?

1. Original 2018 WQTR and Western Isthmus Programme
2. Eastern Isthmus Programme
3. Proposed extended WQTR

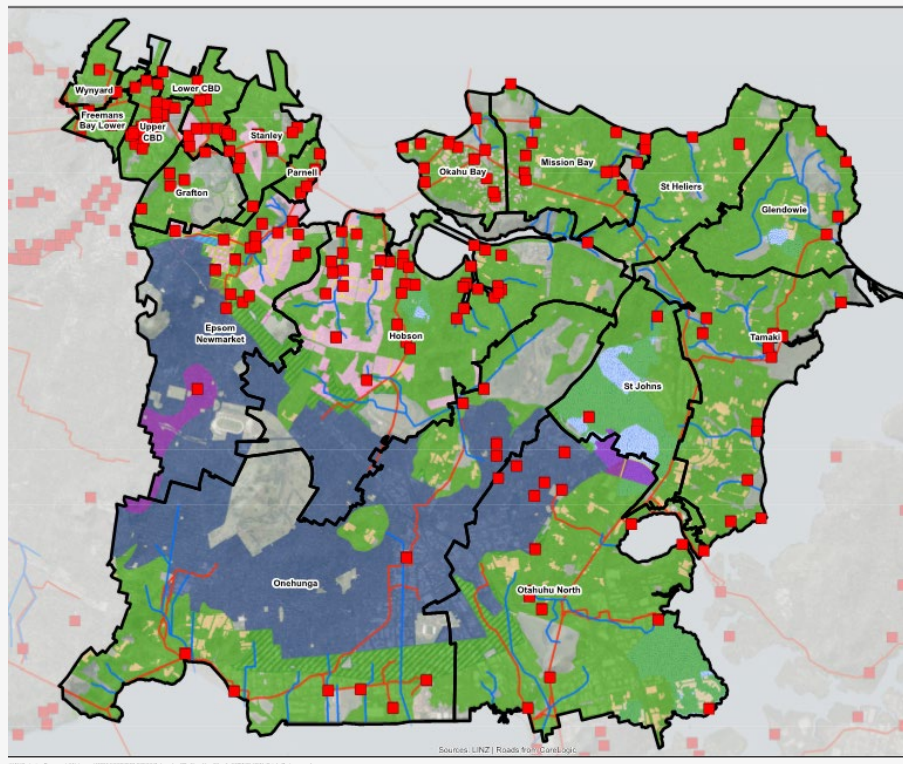


Initial 2018 Water Quality Targeted Rate

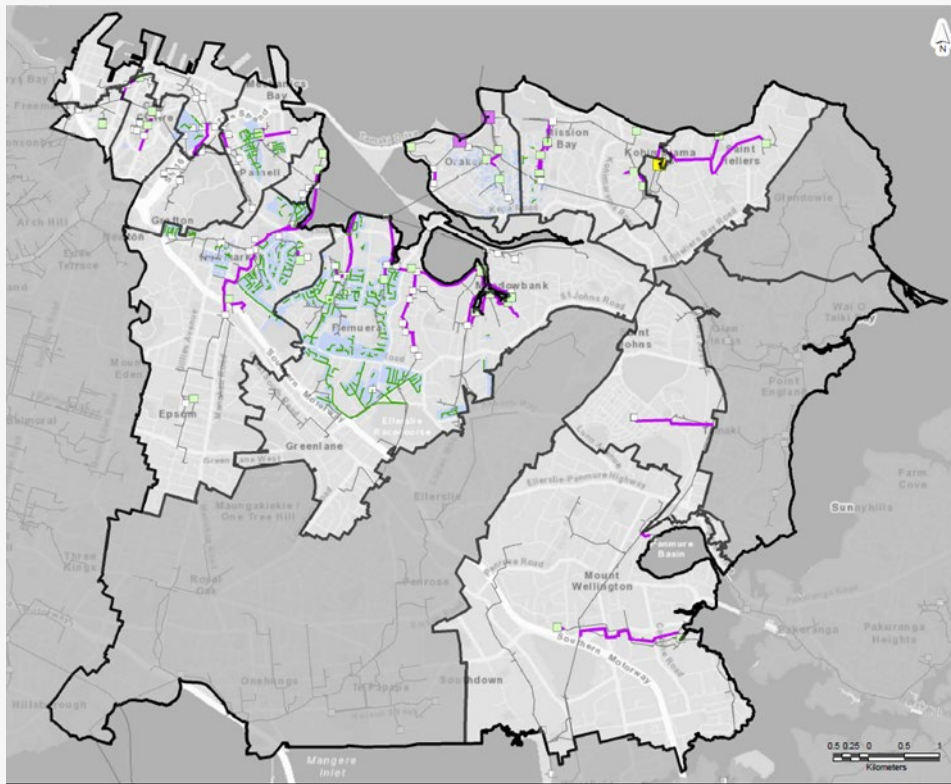
- Five regionwide work programmes
- 80% of WQTR to Western Isthmus Programme
 - Programme of separation and wastewater upgrades
 - Stop combined sewer overflows
 - Creates swimmable beaches from Pt Chevalier to St Mary's Bay by 2028



Eastern Isthmus Programme – The Issue



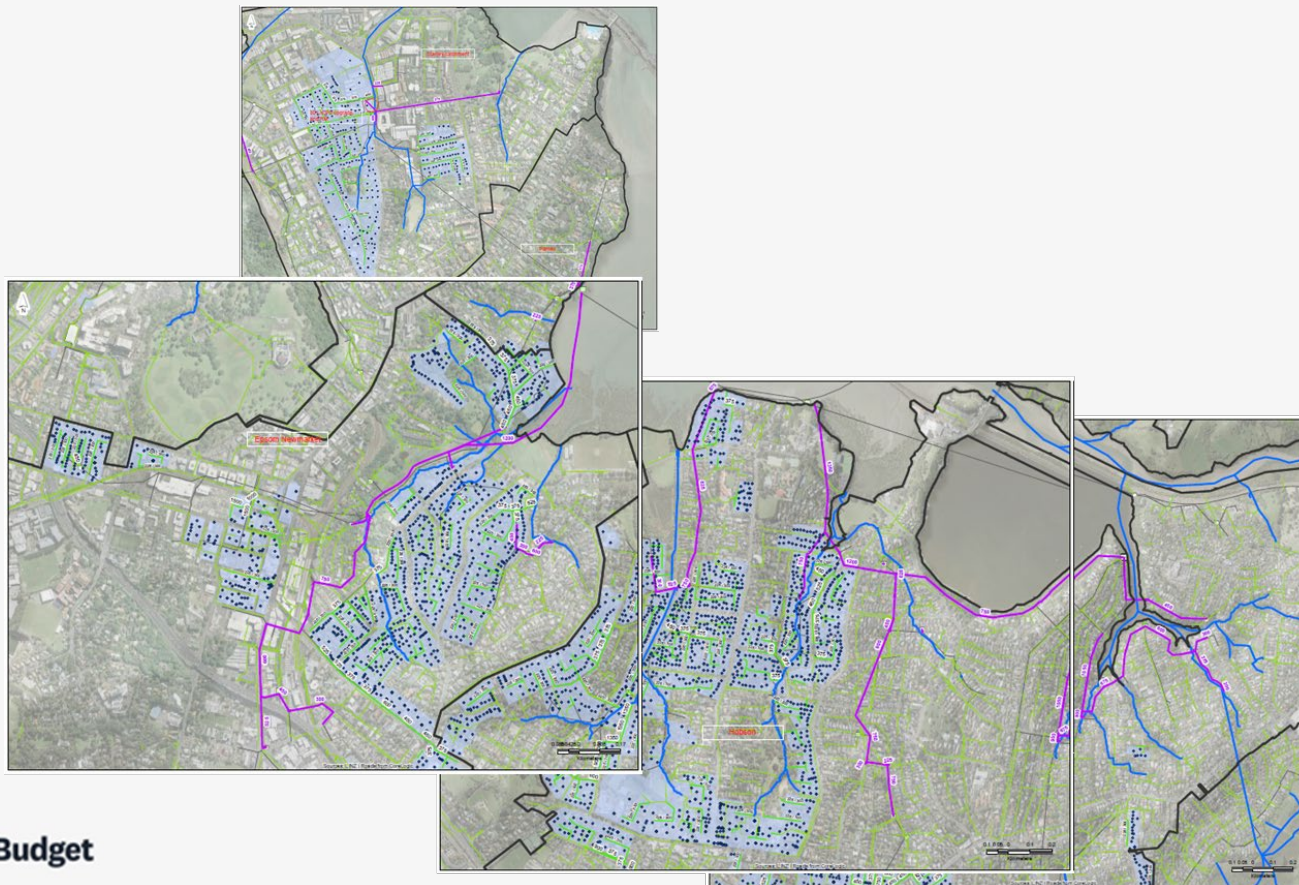
Eastern Isthmus Programme – The Programme



- Address Combined Sewer Overflows from CBD to Kohimarama
- \$390m of separation funded by the extended WQTR
- \$300m of wastewater upgrades funded by Watercare
- Improved swimmability from Judges Bay to Glendowie and also the Tamaki Estuary and Onehunga



Eastern Isthmus Programme – Combined Sewer Area



Our Recovery Budget



Water Quality Targeted Rate with extension but no percentage increase

Option 1: Extend until 2031	29.55	36.45	38.61	58.55	52.84	48.93	54.71	49.00	49.90	50.80	469
Western Isthmus	Delivery (aligned with Watercare), completed 2028										
Eastern Isthmus				Planning and design for major projects				Delivery of major projects			
	Enabling works – critical renewals that enable and support stormwater separation and capacity improvements										
Southern Catchments Alignment						Planning and design for major projects		Delivery of major projects			
Regional Water Quality Programmes	Delivery of existing regional programmes – such as contaminant removal for the Manukau Harbour, Kaipara Harbour, Mahurangi Harbour and North Eastern Beaches							Delivery extended enabling additional projects from 2028			

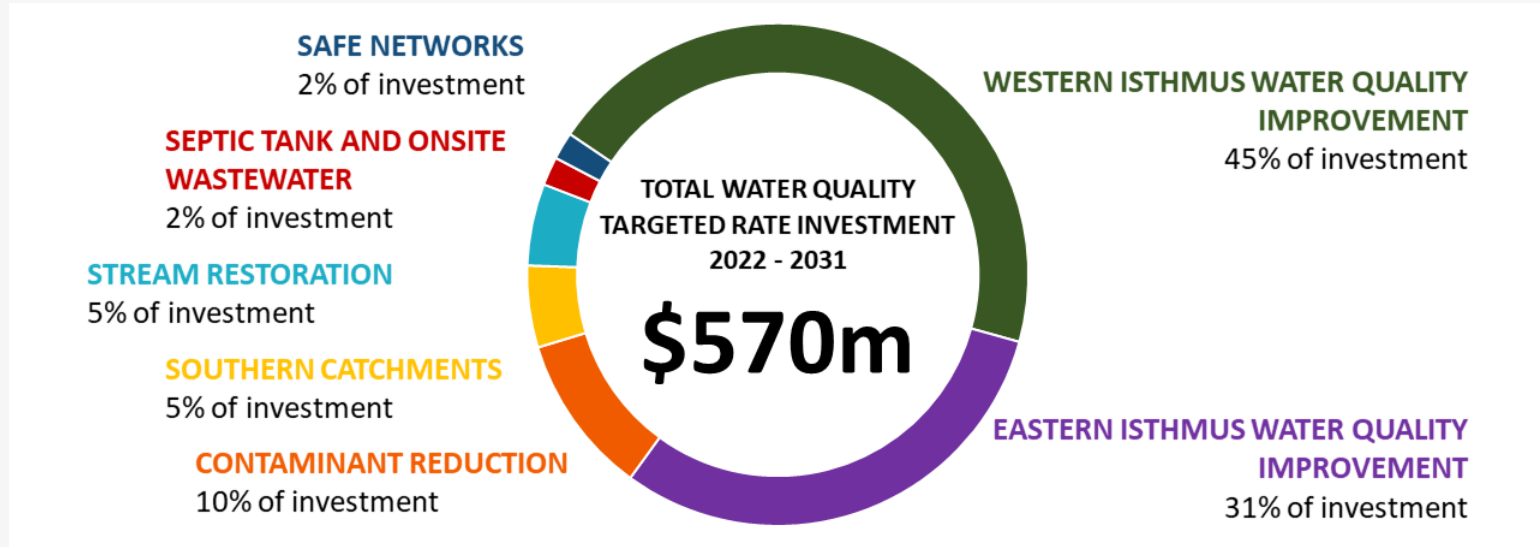


Water Quality Targeted Rate with extension and percentage increase

Option 2 - Extended + 5% +3.5% there after	30.73	39.21	43.06	64.85	61.12	59.31	67.32	64.50	68.00	71.70	570
Western Isthmus	Delivery (aligned with Watercare), completed 2028										
Eastern Isthmus	Plan and design	Delivery of major projects and enabling works combined									
Southern Catchments Alignment	Plan and design	Delivery of major projects									
Regional Water Quality Programmes	Delivery increased and extended enabling additional projects from 2022										



Current proposed extension to the WQTR



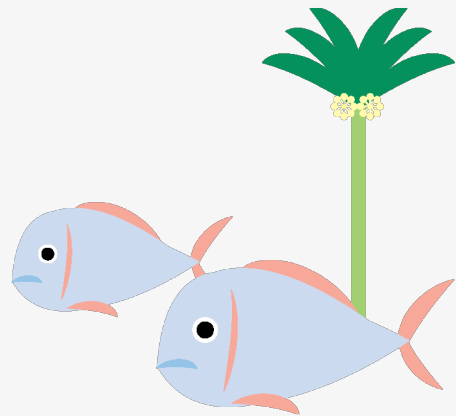
Water quality targeted rate

Extending the water quality targeted rate:

Extend the targeted rate from 2028 to 2031 which will allow us to start work in other parts of the city including Hobson Bay to Kohimarama (Eastern Isthmus Water Quality Improvement Programme) 2028/2029

Increasing the water quality targeted rate:

Hobson Bay to St Heliers water quality improvements (Eastern Isthmus Water Quality Improvement Programme) six years earlier in 2022/2023



Waitemata Local Board Area - Improvement works already underway

Using the water quality targeted rate

Western Isthmus water quality improvement programme

- ❖ Investing \$360 million in infrastructure projects over 10 years to reduce overflows into the Waitematā Harbour.
- ❖ Watercare is also investing in infrastructure to improve water quality, including:
 - \$1.2 billion into the Central Interceptor programme
 - \$400 million into the Western Isthmus water quality improvement programme.

❖ Projects in the Waitematā area:

- Daldy Street outfall upgrade
- Freemans Bay stormwater network separation project
- St Marys Bay area water quality improvement project
- St Marys Bay separation

❖ Safe networks investigation:

Herne Bay, Home Bay, St Marys Bay, Meola Reef and Coks Bay

❖ Stream restoration projects

Newmarket Stream restoration



Waitematā Local Board area – if WQTR extended and increased

❖ **Eastern Isthmus Programme**

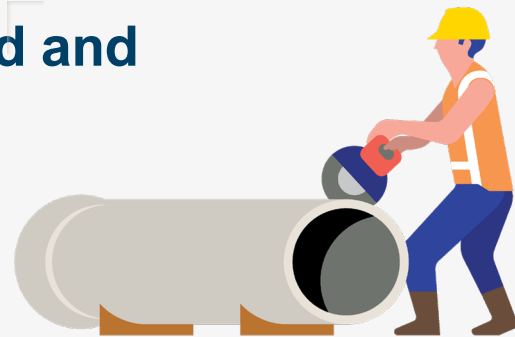
Improved swimmability in Judges and Hobson Bay

❖ **Safe Networks programme**

Doubling of Safe Networks programme will allow a dedicated team to work on operational (dry weather) water quality issues until these are resolved

❖ **Stream Restoration Programme**

Urban stream restoration – watercourse assessments have identified enhancement opportunities in Meola Creek and Motions Creek.



Orakei Local Board area - Delivery of Projects using the Water Quality Targeted Rate

Improvement works already underway

- **Watercare is also investing in infrastructure** to improve water quality, including:
 - \$1.2 billion into the Central Interceptor programme
 - \$400 million into the Western Isthmus water quality improvement programme.
- **Ōkahu Bay**
 - Ōkahu Bay stormwater/wastewater separation project – completion mid-2021
 - Ōkahu Bay mussel seeding
- **Safe Networks investigations**
 - Meadowbank (Pourewa West Catchment)
 - Mission Bay, St Heliers, Kohimarama,
 - Hobson Bay catchment - monitoring and some minor remedial works
- **Stream restoration projects**
 - McArthur Avenue (St Heliers) stream stabilisation
 - Newmarket Stream restoration
 - On-going native planting projects, monitoring and riparian planting



Ōrākei Local Board area – if WQTR extended and increased

❖ **Eastern Isthmus Water Quality Improvement Programme**

Network separation and wastewater overflow reduction – upgrading old pipe network to reduce the volume of overflows from combined networks, including Newmarket, Parnell and Hobson Bay through to St Heliers

❖ **Safe Networks programme**

Doubling of Safe Networks programme will allow a dedicated team to work on operational (dry weather) water quality issues until these are resolved

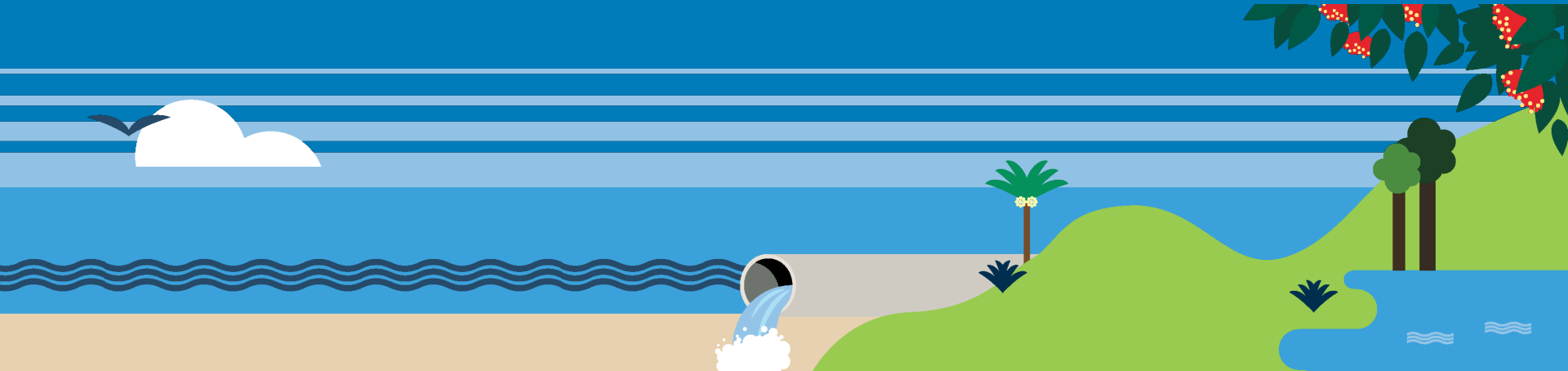
❖ **Stream restoration programme**

Urban stream restoration – watercourse assessments have identified enhancement opportunities in Glendowie Stream, Kohimarama Stream, Mission Bay Stream and Remuera Stream.



Questions?

Have Your Say now



Survey question 3: Water Quality

We are proposing to extend and increase the Water Quality Targeted Rate to invest in improving water quality

For more information on this question please refer to pages 35-36 of the Consultation Document

- ☐ Support the extension and the increase
 - ☐ Support the extension only
 - ☐ Do not support either change



Find out more and give your views



Visit: www.akhaveyoursay.nz/recoverybudget

- Provide feedback online or complete the feedback form included in the Consultation Document
- Request documents at libraries and service centres and freepost to the address provided, or download a copy online and send it to the freepost address provided, or email it to: **akhaveyoursay@aucklandcouncil.govt.nz**.



Karakia Whakamutunga - Closing Karakia

Unuhia, unuhia

Unuhia mai te uru tapu nui

kia wātea, kia māmā,

te ngākau, te tinana, te hinengaro,

i te ara takatū

Koia rā e Rongo

e whakairia ake ki runga

kia tina!

haumi e, hui e!

TĀIKI E!

*Draw on the
supreme sacredness
To clear, to free our heart, body
and soul
Our pathway prepared*

*Lo, there is peace
suspended high above
manifest!
draw together!
Affirm!*





[Akhaveyoursay.nz/recoverybudget](https://akhaveyoursay.nz/recoverybudget)

Our Recovery Budget

