

# Tāmaki Makaurau Recovery

**STORM AFFECTED PROPERTIES**  
**September 2023**



# Agenda

- Word from Deputy Mayor – Desley Simpson
- Future of storm affected land
- What is property categorisation?
- Update on property buyouts
- Support
- Accessing more information
- Frequently asked questions
- Live Q&A session





# Future of storm-affected land

- Government risk categorisation announced 1 May – national framework for storm affected regions
- Recognises that some homes can't or shouldn't be repaired in their current location – keeping people safe from future extreme weather
- In June the Government announced a cost-share with councils in storm affected regions
- Categorisation and buyout of Category 3 residential homes is voluntary (opt-in)
- Auckland Council began contacting individual property engagement in June – about 7,000 properties in scope

**Placards** (Red, yellow, white) are issued after a Rapid Building Assessment to assess immediate risk in an emergency response situation

**Property categorisation** considers the future, long-term risk to life if another weather event occurs



# Property categorisation explained

1

## Low risk

These homes are considered low risk which means the home can simply be repaired.

2

## Managed-risk

These homes can be made safe through community infrastructure (2C) or changes on the property (2P)

3

## High risk

These homes aren't safe to live in because of future risk to life. Homes shouldn't remain at these sites

# Getting to your property category

## Step 1

Complete the Flooding & Landslide Registration form  
Council does initial desktop assessment to identify likely high-risk properties



## Step 2

If we think your home may be high risk we'll organise a flood or geotech engineer to look at your property (no cost to you)



## Step 3

A detailed risk assessment will be completed based all the information and a property category assigned



## Step 4

Discussion with the property owner to explain categorisation and next steps for your situation



# Cost-share with Government agreed in-principle by Governing Body

## Cat 3 buyouts

\$774m to purchase estimated 700 Category 3 homes (50/50 share with council)

## Transport network recovery

\$390 million Government contribution towards transport recovery costs

## Cat 2 solutions

\$820 million towards flood protection works

**\$2bn package towards recovery & resilience**



# Property buyout timeline

## AUGUST

### Governing Body in-principle agreement

In principle agreement to cost-share with Government Agreement to proceed to public consultation

### Property categorisation

Flood and landslide assessments continue

## SEPTEMBER

### Governing Body workshops

Workshops on valuation methodology and buy-out processes and policy

### Public consultation

Proposed dates 11-24 Sept

### Property categorisation

Flood and landslide assessments continue

## OCTOBER

### Governing Body Decision making

Extraordinary meeting in early October for final decision to progress to buy-out

### 1:1 discussions with Category 3 property owners

Buyout conversations start end October

### Property categorisation

Flood and landslide assessments continue



# Support is available for you



## Storm Recovery Navigator Service

Support for individuals and households to access the info, services & support they need

[navigators@aucklandcouncil.govt.nz](mailto:navigators@aucklandcouncil.govt.nz)



## Need to talk?

Free call or free text **1737** any time, to talk to (or text with) a trained counsellor or peer support worker.



## NZ Claims Resolution Service

Free independent support to help avoid disputes, resolve issues, and settle claims

**0508 624 327**



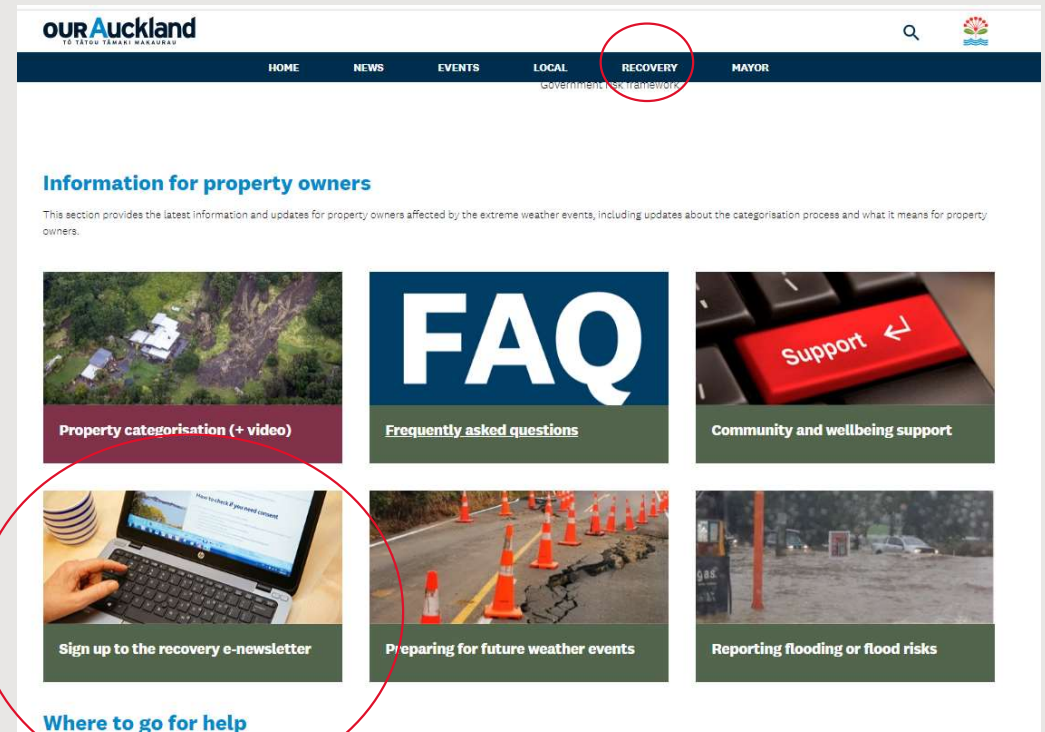


# Finding information

Visit the **Recovery page on Our Auckland website**

Sign-up for the e-newsletter for latest updates

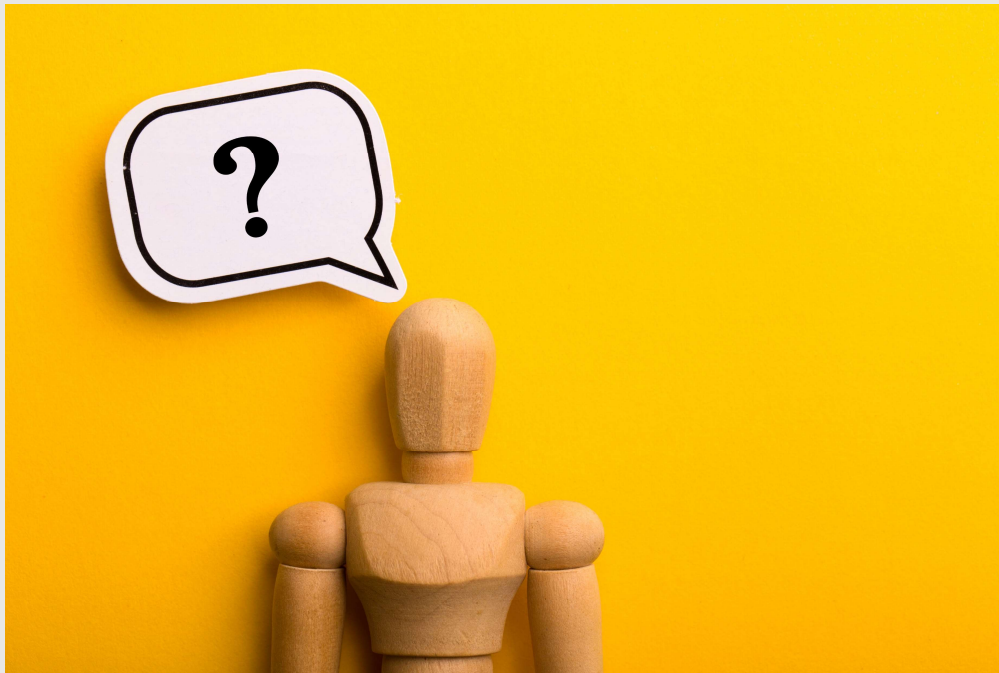
- via the sign-up tile on **Recovery Page of Our Auckland website**



**Look in the chat function for links**



# Question and answer session





# Tāmaki Makaurau Recovery

Thank you for attending

