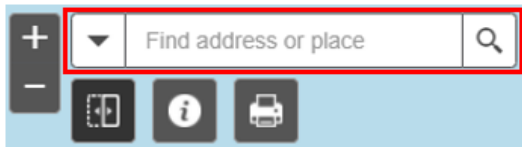


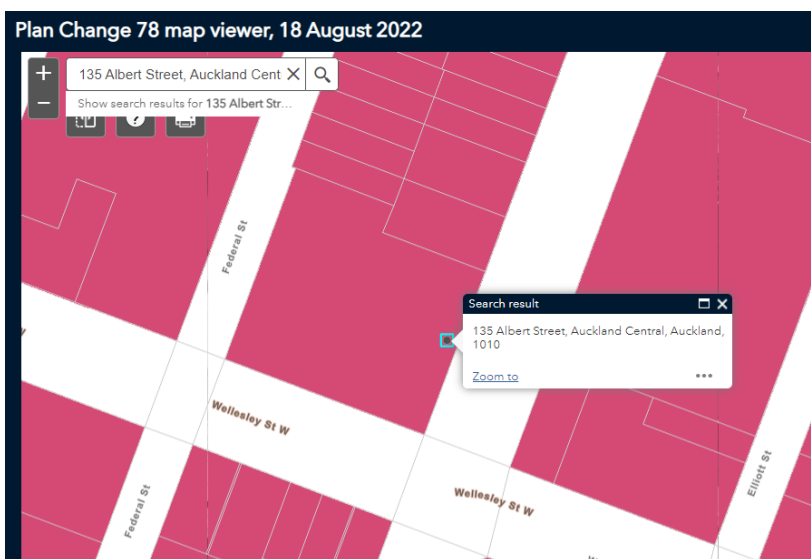
How to find your updated zone in GeoMaps

Plan Change 78 [Map](#)

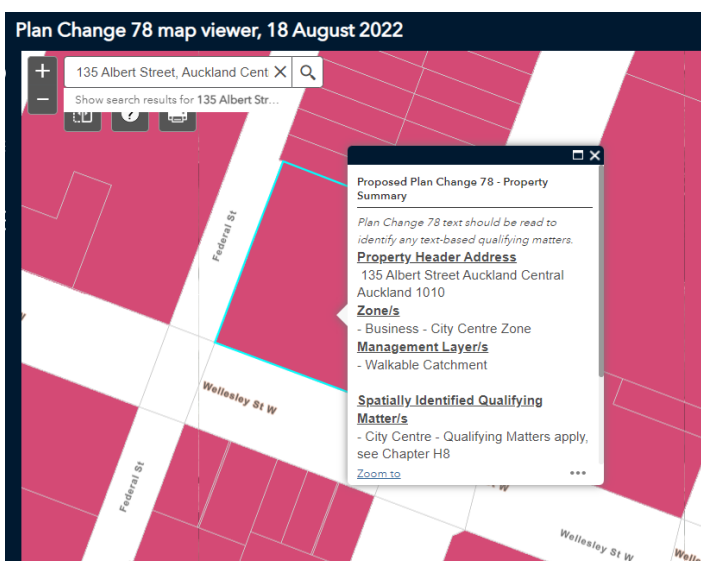
1. To find your zone and any identified qualifying matters, type your address in the search bar and select from the drop-down results.



2. When the map takes you to your address, click 'zoom to' to zoom into your address location to see the property boundaries.



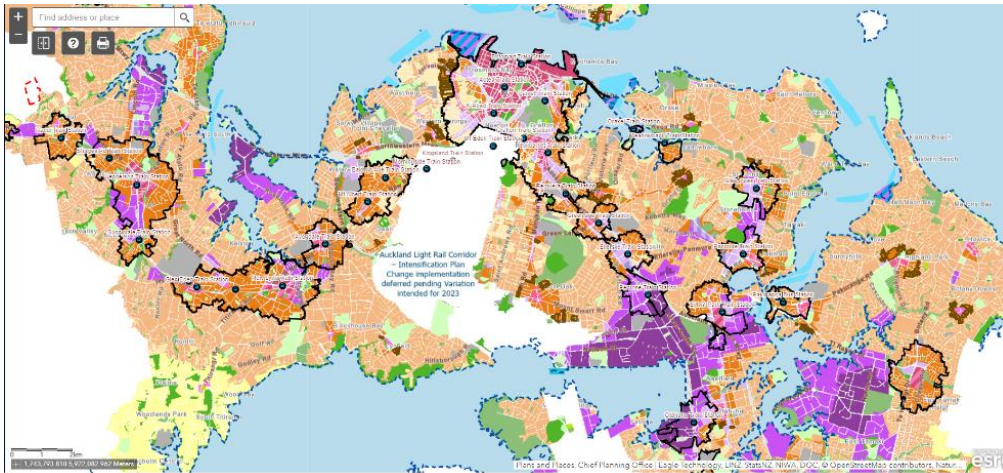
3. Click anywhere with your property boundary and your property summary box will appear, outlining your zone and any qualifying matters if they apply.



Click [here](#) for a video on how to use Plan Change 78 map viewer



Areas whited out in the Plan Change 78 map viewer



You will see some areas are whited out on the map viewer, this is because Plan Change 78 is a district plan change that applies to Auckland’s urban environment. Rural land and the future urban zone are not shown. Other places where Plan Change 78 does not apply is Auckland’s Hauraki Gulf islands and Special Housing Areas.

The Auckland Light Rail corridor is also not shown as Auckland Council has deferred its plan change and intends to prepare a variation in 2023.

In all these places, indicated by the whiteout, the existing planning rules and zones are unaffected by Plan Change 78. It means that your address remains under the Unitary Plan Map and can be searched [here](#).

